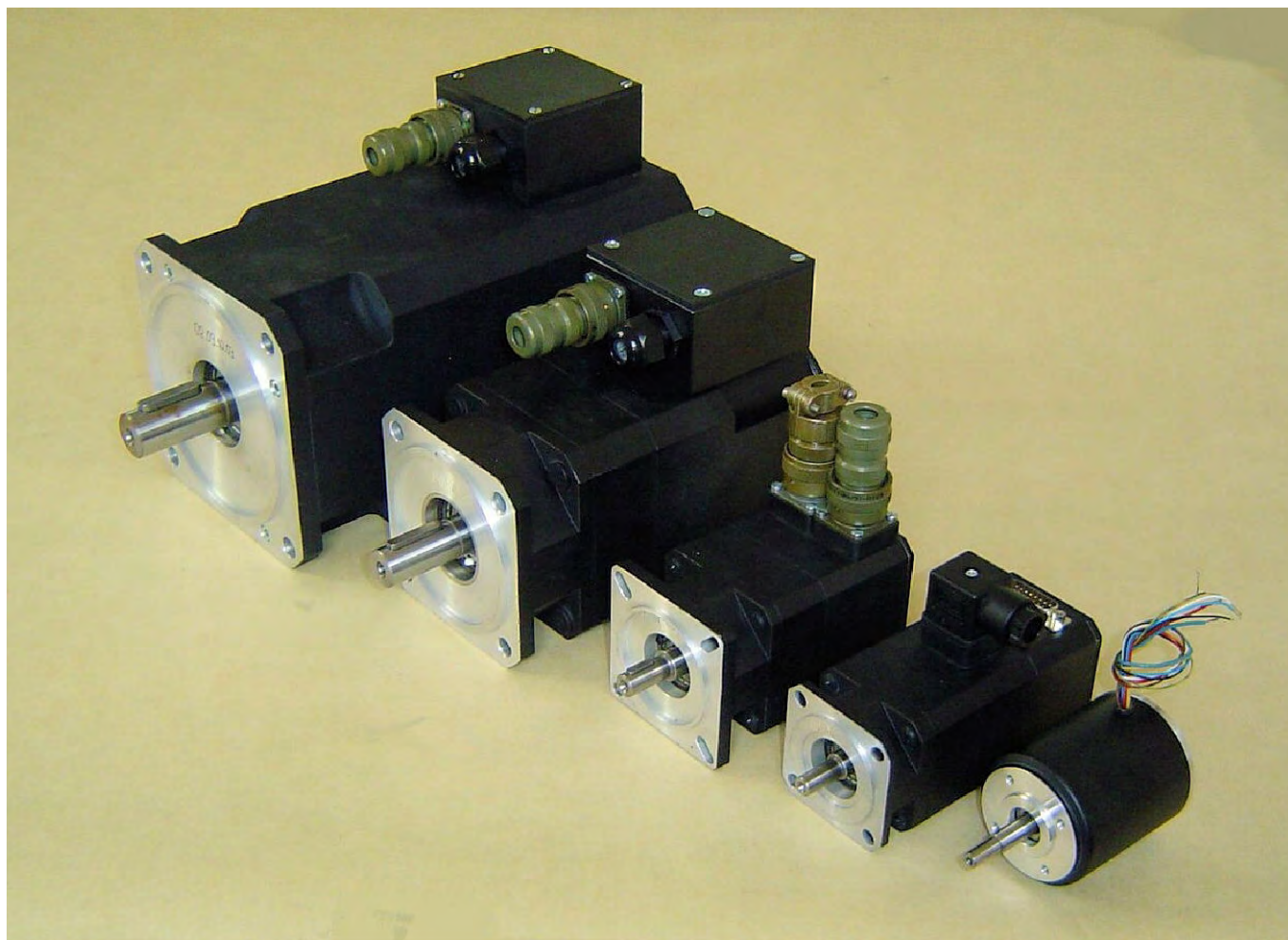


# Servomotori Brushless

## Brushless Servomotors



**Coppia da 0.4Nm a 40Nm**  
**Torque from 0.4Nm to 40Nm**

# BLH 50

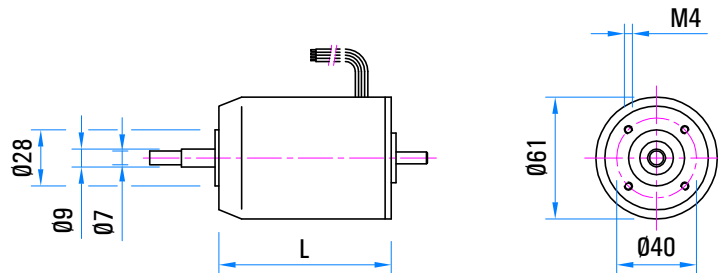
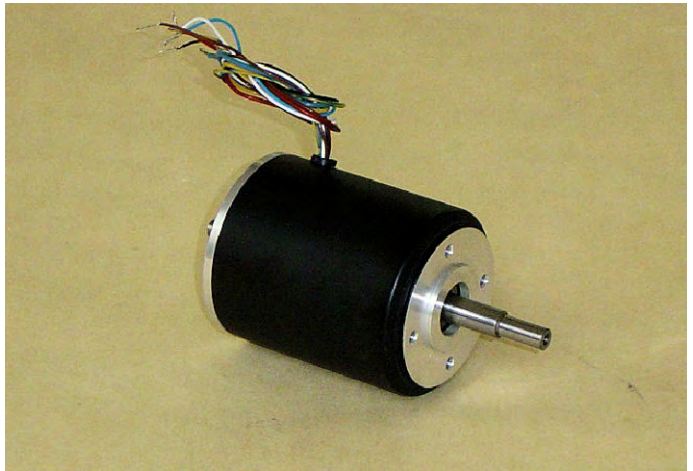
Servomotori Brushless - Coppia da 0.4Nm a 0.8Nm  
Brushless Servomotors - Torque from 0.4Nm to 0.8Nm

## CARATTERISTICHE PRINCIPALI

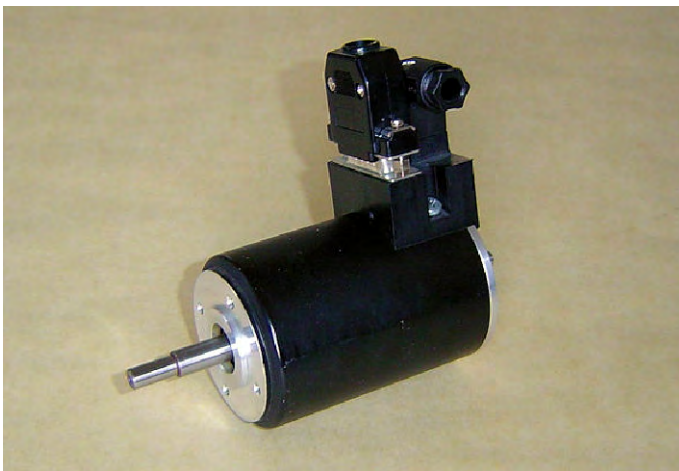
- Motori sincroni senza spazzole a norme CEI ed IEC.
- Forma d'onda sinusoidale.
- Rotore a 8 poli con magneti a terre rare.
- "BLH" retroazione da sonde hall.
- Fili uscenti.
- Grado di protezione IP54 - isolamento classe F.

## MAIN FEATURES

- Synchronous motors no brushes according to CEI and IEC standards.
- Sinusoidal waveform.
- 8 poles rotor with rare earth magnets.
- Hall sensors feedback "BLH".
- Free wires.
- Degree of protection IP54 - insulation F class.



Tipo / Type	L	Coppia a rotore bloccato / Continuous stall torque	Tensione a / Voltage at 1000min <sup>-1</sup>
BLH50.04	71.5	0.4 Nm	6V - 10V
BLH50.06	86.5	0.6 Nm	6V - 10V
BLH50.08	101.5	0.8 Nm	6V - 10V



## OPZIONI :

- Connettori segnali e potenza
- Flange e alberi speciali
- Encoder EH30

## OPTIONS :

- Signals and power connectors
- Special shafts and flanges
- Encoder EH30

# BLR-BLE-BLH 62

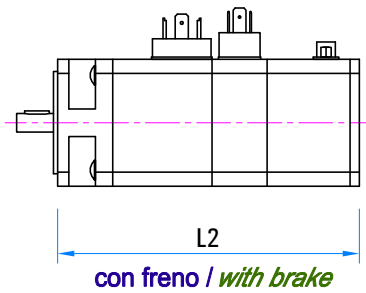
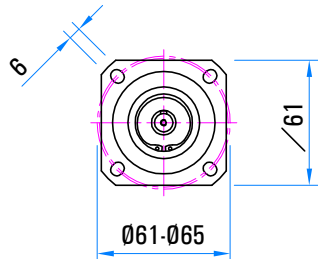
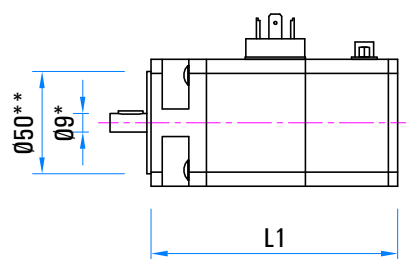
Servomotori Brushless - Coppia da 0.4Nm a 0.8Nm  
 Brushless Servomotors - Torque from 0.4Nm to 0.8Nm

## CARATTERISTICHE PRINCIPALI

- Motori sincroni senza spazzole a norme CEI ed IEC.
- Forma d'onda sinusoidale.
- Rotore a 8 poli con magneti a terre rare.
- "BLR" retroazione da resolver.
- "BLE" retroazione da encoder.
- "BLH" retroazione da sonde hall.
- Connettori segnali e potenza.
- Grado di protezione IP54 - isolamento classe F.

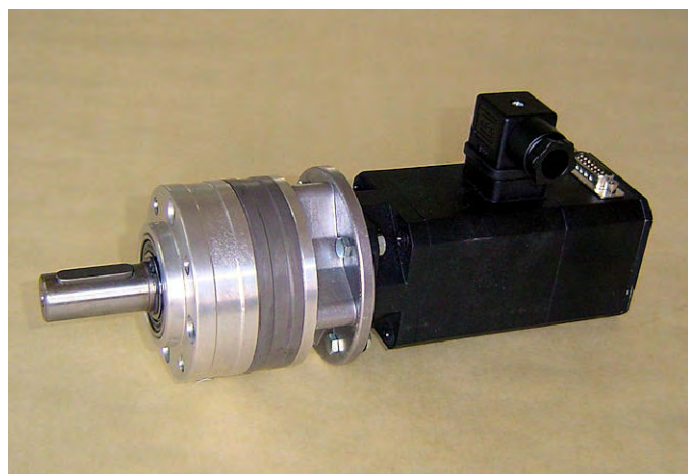
## MAIN FEATURES

- Synchronous motors no brushes according to CEI and IEC standards.
- Sinusoidal waveform.
- 8 poles rotor with rare earth magnets.
- Resolver feedback "BLR".
- Encoder feedback "BLE".
- Hall sensors feedback "BLH".
- Signal and power connectors.
- Degree of protection IP54 - insulation F class.



\* = A richiesta / On request Ø11  
 \*\* = A richiesta / On request Ø40

Tipo / Type	L1	L2	Coppia a rotore bloccato Continuous stall torque	Tensione a / Voltage at 1000min <sup>-1</sup>
BL_62.04	120.5	147.5	0.4 Nm	10V - 32V - 55V
BL_62.06	135.5	162.5	0.6 Nm	10V - 32V - 55V
BL_62.08	150.5	177.5	0.8 Nm	10V - 32V - 55V



## OPZIONI :

- Freno di sicurezza interno
- Fili uscenti
- Flange e alberi speciali

## OPTIONS :

- Safety brake inside
- Free wires
- Special shafts and flanges

# BLR-BLE-BLH 72

Servomotori Brushless - Coppia da 0.7Nm a 3Nm

Brushless Servomotors - Torque from 0.7Nm to 3Nm

## CARATTERISTICHE PRINCIPALI

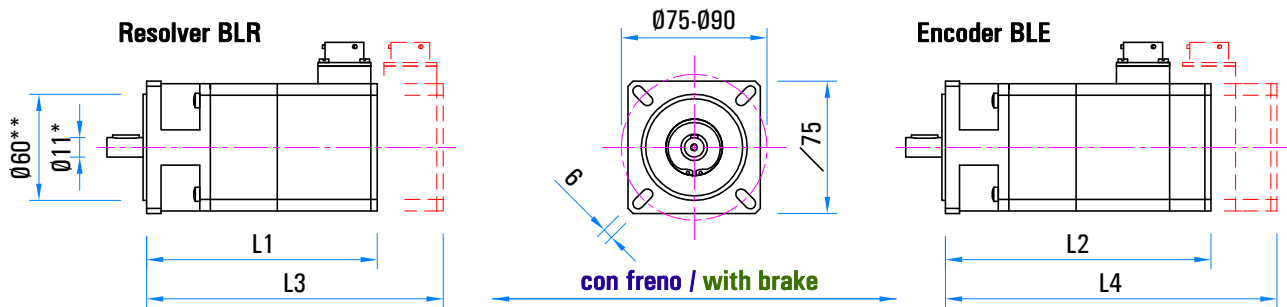
- Motori sincroni senza spazzole a norme CEI ed IEC.
- Forma d'onda sinusoidale.
- Rotore a 6 poli con magneti a terre rare.
- "BLR" retroazione da resolver.
- "BLE" retroazione da encoder.
- Connettori segnali e potenza.
- Grado di protezione IP65 - isolamento classe F.

## MAIN FEATURES

- Synchronous motors no brushes according to CEI and IEC standards.
- Sinusoidal waveform.
- 6 poles rotor with rare earth magnets.
- Resolver feedback "BLR".
- Encoder feedback "BLE".
- Signal and power connectors.
- Degree of protection IP65 - insulation F class.



\* - A richiesta / On request Ø14  
 \*\* - A richiesta / On request Ø70



Tipo / Type	L1	L2	L3	L4	Coppia a rotore bloccato Continuous stall torque	Tensione a / Voltage at 1000min <sup>-1</sup>
BL_72.08	120.5	140.5	152	172	0.8 Nm	12V - 27V - 55V - 100V
BL_72.12	130.5	150.5	162	182	1.2 Nm	12V - 32V - 55V - 100V
BL_72.23	160.5	180.5	192	212	2.3 Nm	12V - 43V - 55V - 100V
BL_72.30	190.5	210.5	222	242	3 Nm	12V - 48V - 55V - 100V



## OPZIONI :

- Freno di sicurezza interno
- Fili uscenti
- Connettori a 90°
- Flange e alberi speciali

## OPTIONS :

- Safety brake inside
- Free wires
- 90° connectors
- Special shafts and flanges

# BLR-BLE 105

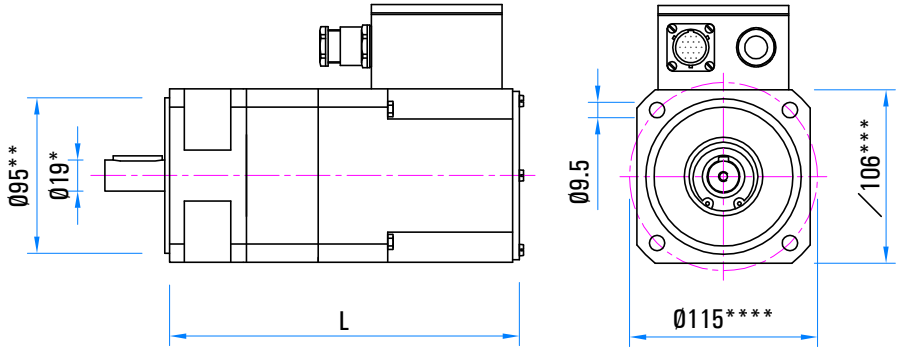
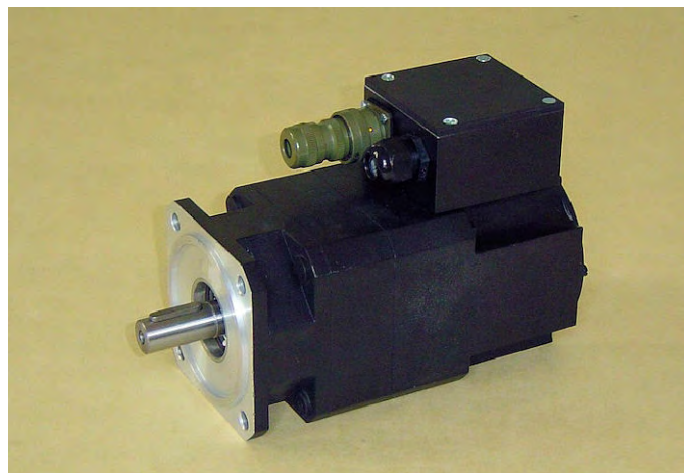
Servomotori Brushless - Coppia da 4.5Nm a 15Nm  
 Brushless Servomotors - Torque from 4.5Nm to 15Nm

## CARATTERISTICHE PRINCIPALI

- Motori sincroni senza spazzole a norme CEI ed IEC.
- Forma d'onda sinusoidale.
- Rotore a 6 poli con magneti a terre rare.
- "BLR" retroazione da resolver.
- "BLE" retroazione da encoder.
- Connettori segnali e morsettiere potenza.
- Grado di protezione IP65 - isolamento classe F.

## MAIN FEATURES

- Synchronous motors no brushes according to CEI and IEC standards.
- Sinusoidal waveform.
- 6 poles rotor with rare earth magnets.
- Resolver feedback "BLR".
- Encoder feedback "BLE".
- Signals connector and power terminal board.
- Degree of protection IP65 - insulation F class.



- \* - A richiesta / On request Ø24
- \*\* - A richiesta / On request Ø130
- \*\*\* - A richiesta / On request /140
- \*\*\*\* - A richiesta / On request Ø165

Tipo / Type	L	Coppia a rotore bloccato / Continuous stall torque	Tensione a / Voltage at 1000min <sup>-1</sup>
BL_105.04	207	4.5 Nm	55V - 110V
BL_105.06	217	6 Nm	55V - 110V
BL_105.09	237	9 Nm	55V - 110V - 165V
BL_105.12	257	12 Nm	55V - 110V - 165V
BL_105.15	277	15 Nm	55V - 110V - 165V



## OPZIONI :

- Freno di sicurezza interno
- Connettore potenza
- Flange e alberi speciali
- Esecuzione servoventilata.

## OPTIONS :

- Safety brake inside
- Power connector
- Special shafts and flanges
- Force ventilated construction

# BLR-BLE 145

Servomotori Brushless - Coppia da 17Nm a 40Nm

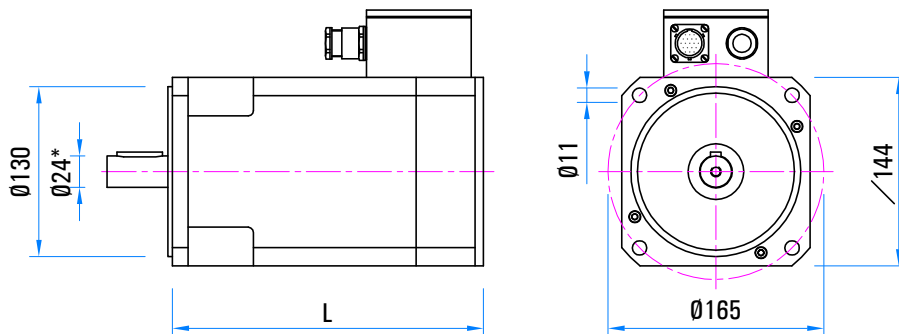
Brushless Servomotors - Torque from 17Nm to 40Nm

## CARATTERISTICHE PRINCIPALI

- Motori sincroni senza spazzole a norme CEI ed IEC.
- Forma d'onda sinusoidale.
- Rotore a 8 poli con magneti a terre rare.
- "BLR" retroazione da resolver.
- "BLE" retroazione da encoder.
- Connettori segnali e morsetti potenza.
- Grado di protezione IP65 - isolamento classe F.

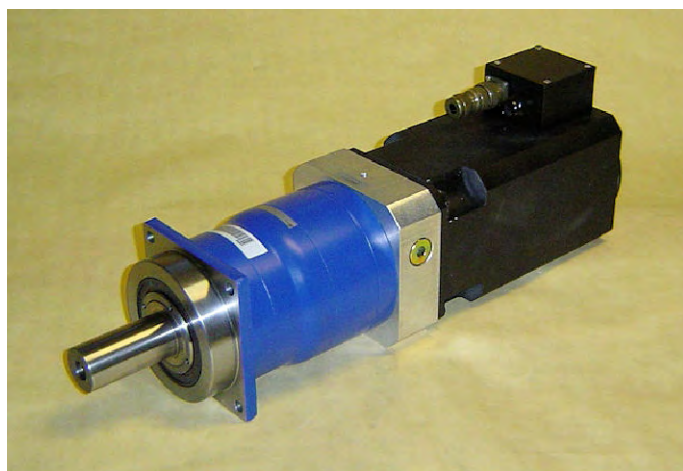
## MAIN FEATURES

- Synchronous motors no brushes according to CEI and IEC standards.
- Sinusoidal waveform.
- 8 poles rotor with rare earth magnets.
- Resolver feedback "BLR".
- Encoder feedback "BLE".
- Signals connector and power terminal board.
- Degree of protection IP65 - insulation F class.



\* = A richiesta / On request Ø28

Tipo / Type	L	Coppia a rotore bloccato / Continuous stall torque	Tensione a / Voltage at 1000min <sup>-1</sup>
BL_145.17	232	17 Nm	110V - 165V
BL_145.22	242	22 Nm	110V - 165V
BL_145.26	262	26 Nm	110V - 165V
BL_145.32	282	32 Nm	110V - 165V
BL_145.40	322	40 Nm	110V - 165V



## OPZIONI :

- Freno di sicurezza interno
- Connettore potenza
- Flange e alberi speciali

## OPTIONS :

- Safety brake inside
- Power connector
- Special shafts and flanges

# Servomotori C.C.

## D.C. Servomotors



Coppia da 0.2Nm a 8Nm  
Torque from 0.2Nm to 8Nm

# MP 540

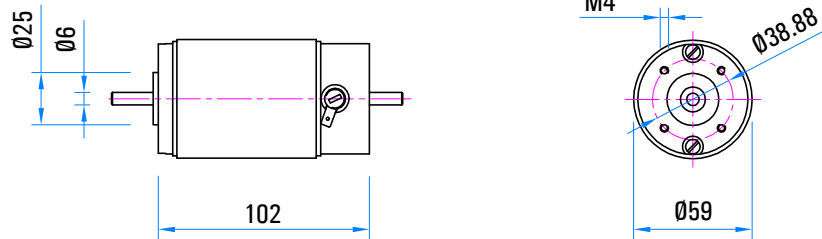
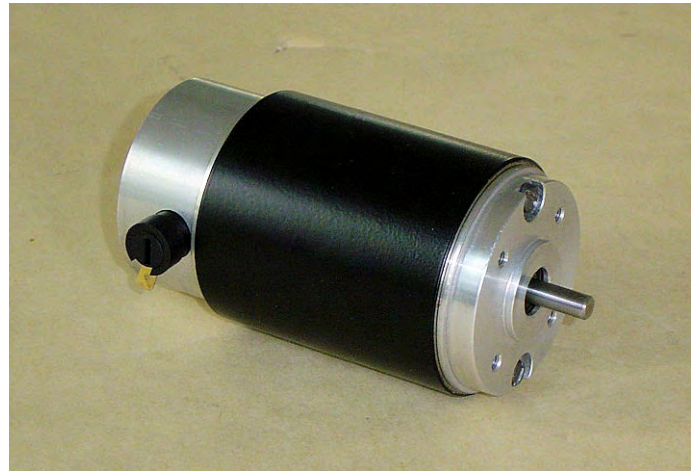
Servomotore C.C. - Coppia 0.2Nm  
 D.C. Servomotor - Torque 0.2Nm

## CARATTERISTICHE PRINCIPALI

- Servomotori C.C. a norme CEI ed IEC.
- 2 poli - magnete permanente.
- Grado di protezione IP54.
- Isolamento classe F e H.
- Terminali faston.

## MAIN FEATURES

- D.C. servomotors according to CEI and IEC standards.
- 2 poles - permanent magnet.
- Degree of protection IP54.
- Insulation F and H class.
- Faston terminals.



Tipo /Type	L	Coppia a rotore bloccato / Continuous stall torque	Tensione a / Voltage at 1000min <sup>-1</sup>
MP 540	102	0.2 Nm	8V



## OPZIONI :

- Encoder

## OPTIONS :

- Encoder



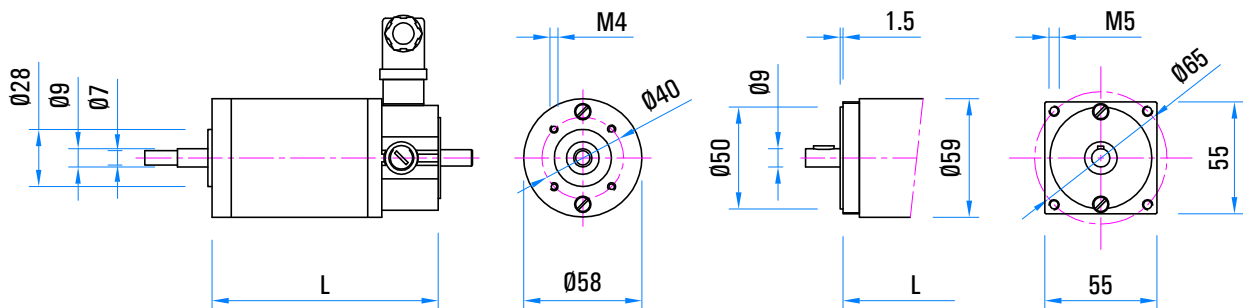
## Servomotori C.C. - Coppia da 0.2Nm a 0.45Nm D.C. Servomotors - Torque from 0.2Nm to 0.45Nm

### CARATTERISTICHE PRINCIPALI

- Servomotori C.C. a norme CEI ed IEC.
- 2 poli - magnete permanente.
- Grado di protezione IP54.
- Isolamento classe F e H.
- Connettore.

### MAIN FEATURES

- D.C. servomotors according to CEI and IEC standards.
- 2 poles - permanent magnet.
- Degree of protection IP54.
- Insulation F and H class.
- Connector.



Tipo / Type	L	Coppia a rotore bloccato / Continuous stall torque	Tensione a / Voltage at 1000min <sup>-1</sup>
MP 44M	112	0.2 Nm	8V - 16V - 24V - 53V
MP 44L	132	0.3 Nm	8V - 16V - 24V - 53V
MP 44XL	163	0.45 Nm	8V - 16V - 24V - 53V



### OPZIONI :

- Flange e alberi speciali
- Freno di sicurezza esterno
- Dinamo tachimetrica
- Encoder
- Cavo o terminali faston

### OPTIONS :

- Special shafts and flanges
- External safety brake
- Tachogenerator
- Encoder
- Cable or faston terminals

# MP 66

Servomotori C.C. - Coppia da 0.7Nm a 2.1Nm

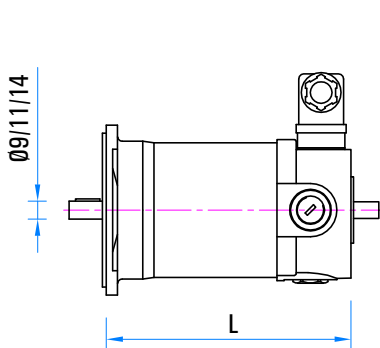
D.C. Servomotor - Torque from 0.7Nm to 2.1Nm

## CARATTERISTICHE PRINCIPALI

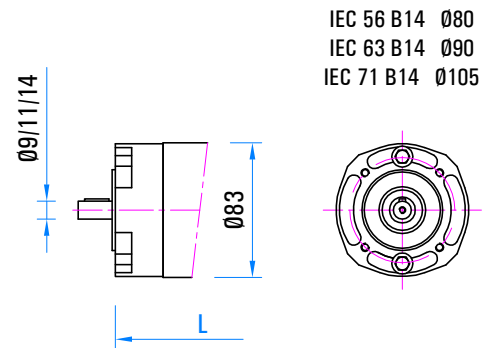
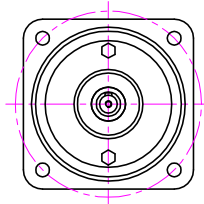
- Servomotori C.C. a norme CEI ed IEC.
- 2 poli - magnete permanente.
- Grado di protezione IP54.
- Isolamento classe F e H.
- Connettore.

## MAIN FEATURES

- D.C. servomotors according to CEI and IEC standards.
- 2 poles - permanent magnet.
- Degree of protection IP54.
- Insulation F and H class.
- Connector.



IEC 56 B5 Ø120  
IEC 63 B5 105x105  
IEC 71 B5 120x120



IEC 56 B14 Ø80  
IEC 63 B14 Ø90  
IEC 71 B14 Ø105

Tipo / Type	L	Coppia a rotore bloccato / Continuous stall torque	Tensione a / Voltage at 1000min <sup>-1</sup>
MP 66S	150	0.7 Nm	16V - 24V - 40V - 53V - 80V
MP 66M	197	1.4 Nm	16V - 24V - 40V - 53V - 80V
MP 66L	242	2.1 Nm	16V - 24V - 40V - 53V - 80V



## OPZIONI :

- Flange e alberi speciali
- Freno di sicurezza esteno
- Dinamo tachimetrica
- Encoder
- Cavo o morsettiera

## OPTIONS :

- Special shafts and flanges
- External safety brake
- Tachogenerator
- Encoder
- Cable or terminal board

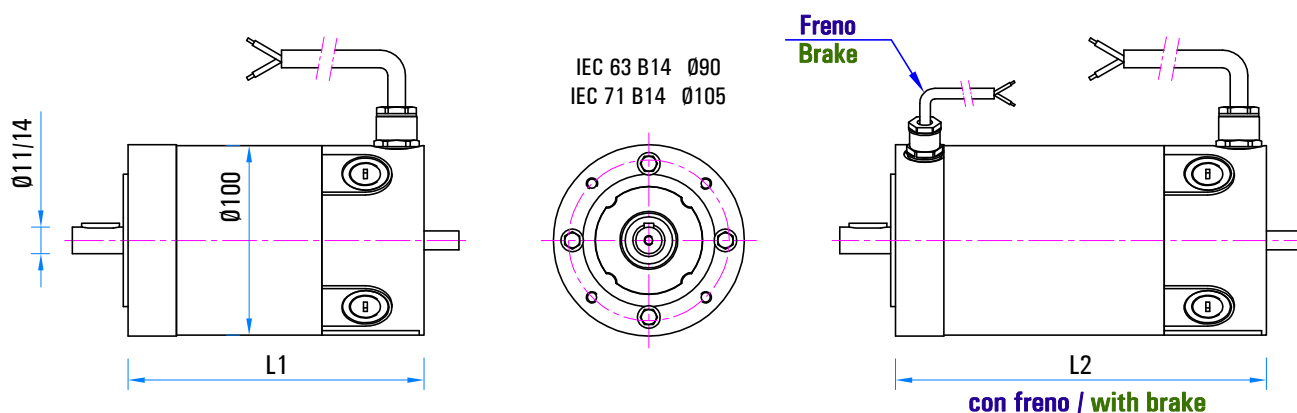
## Servomotori C.C. - Coppia da 1.5Nm a 4.1Nm D.C. Servomotor - Torque from 1.5Nm to 4.1Nm

### CARATTERISTICHE PRINCIPALI

- Servomotori C.C. a norme CEI ed IEC.
- 2 o 4 poli - magnete permanente.
- Grado di protezione IP54.
- Isolamento classe F e H.
- Cavo.

### MAIN FEATURES

- D.C. servomotors according to CEI and IEC standards.
- 2 or 4 poles - permanent magnet.
- Degree of protection IP54.
- Insulation F and H class.
- Cable.



Tipo / Type	L1	L2	Coppia a rotore bloccato / Continuous stall torque	Tensione a / Voltage at 1000min <sup>-1</sup>
MP 70S	156.5	187	1.5 Nm	24V - 32V - 40V - 53V
MP 70M	206.5	237	2.9 Nm	24V - 32V - 40V - 53V
MP 70L	256.5	287	4.1 Nm	24V - 32V - 40V - 53V



### OPZIONI :

- Flange e alberi speciali
- Freno di sicurezza interno o esterno
- Dinamo tachimetrica
- Encoder
- Connettore max. 15A
- Protezione IP66

### OPTIONS :

- Special shafts and flanges
- Inside or external safety brake
- Tachogenerator
- Encoder
- Connectors max. 15A
- IP66 protection

# MP 77

Servomotori C.C. - Coppia da 1.5Nm a 8Nm

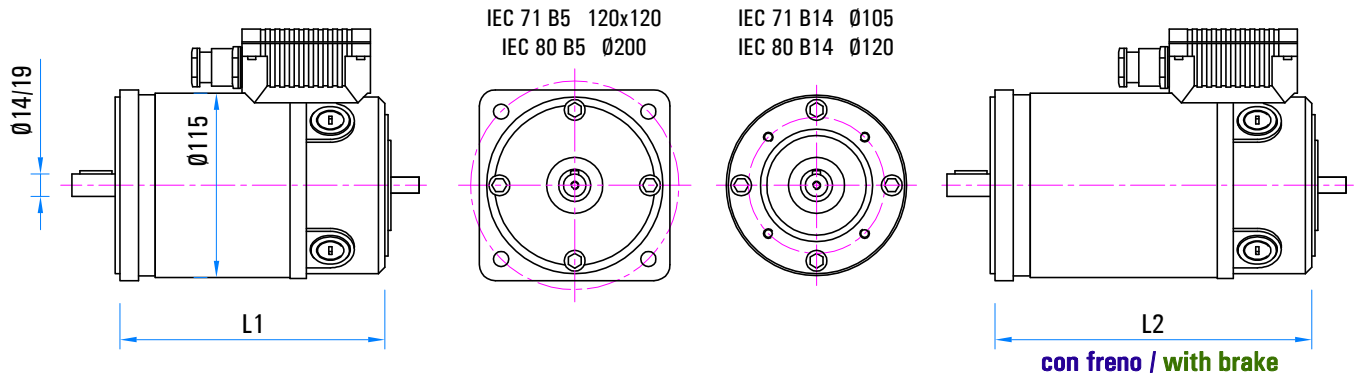
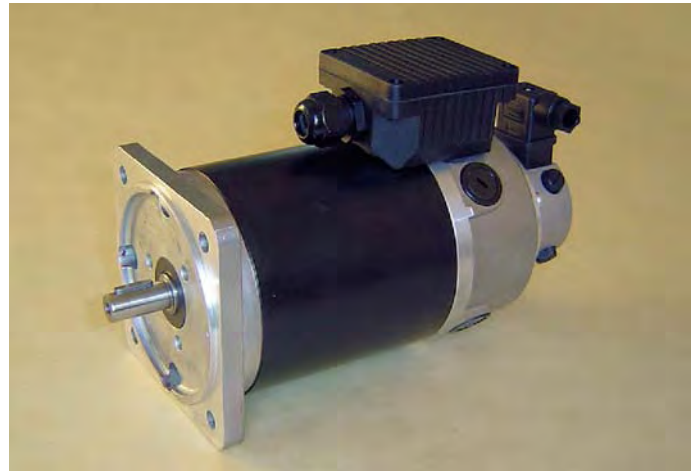
D.C. Servomotor - Torque from 1.5Nm to 8Nm

## CARATTERISTICHE PRINCIPALI

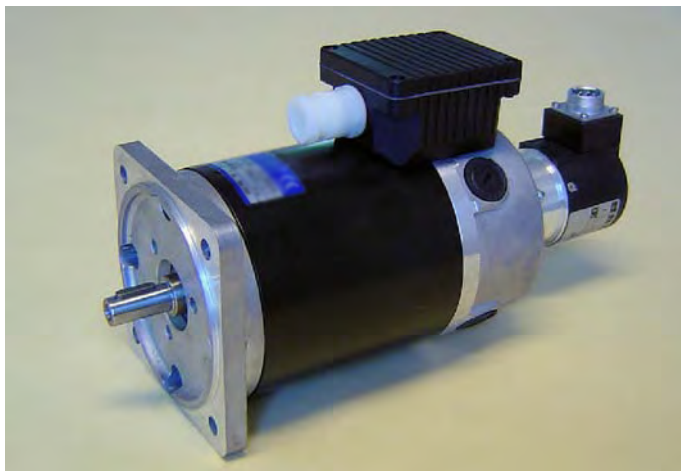
- Servomotori C.C. a norme CEI ed IEC.
- 4 poli - magnete permanente.
- Grado di protezione IP54.
- Isolamento classe F e H.
- Morsettiera.

## MAIN FEATURES

- D.C. servomotors according to CEI and IEC standards.
- 4 poles - permanent magnet.
- Degree of protection IP54.
- Insulation F and H class.
- Terminal board.



Tipo / Type	L1	L2	Coppia a rotore bloccato / Continuous stall torque	Tensione a / Voltage at 1000min <sup>-1</sup>
MP 77K	158	193	1.5 Nm	24V - 30V - 40V - 53V
MP 77S	192	227	2.8 Nm	30V - 40V - 53V - 80V - 107V
MP 77M	222	257	4.1 Nm	30V - 40V - 53V - 80V - 107V
MP 77L	252	287	5.5 Nm	30V - 40V - 53V - 80V - 107V
MP 77XL	307	342	8 Nm	40V - 53V - 80V - 107V



## OPZIONI :

- Flange e alberi speciali
- Freno di sicurezza interno o esterno
- Dinamo tachimetrica
- Encoder
- Cavo

## OPTIONS :

- Special shafts and flanges
- Inside or external safety brake
- Tachogenerator
- Encoder
- Cable

# Motori C.C. alimentazione da batteria

## D.C. Motors battery supply



Potenza da 25W a 14kW

Power from 25W to 14kW

# M 4835-M 5946

Motori C.C. alimentazione da batteria - Potenza da 25W a 115W  
 D.C. Motors battery supply - Power from 25W to 115W

## CARATTERISTICHE PRINCIPALI

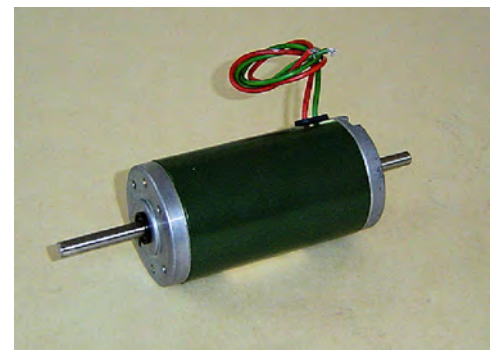
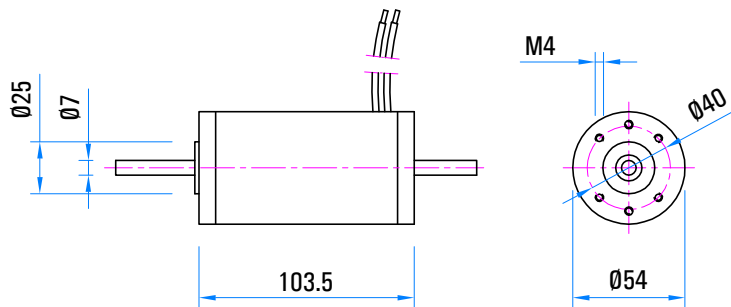
- Motori C.C. a norme CEI ed IEC.
- 2 poli - magnete permanente.
- Alimentazione da batteria 12V-24V.
- Grado di protezione IP54.
- Isolamento classe F.
- Servizio intermittente.

## MAIN FEATURES

- D.C. motors according to CEI and IEC standards.
- 2 poles - permanent magnet.
- Battery supply 12V-24V.
- Degree of protection IP54.
- Insulation F class.
- Intermittent duty.

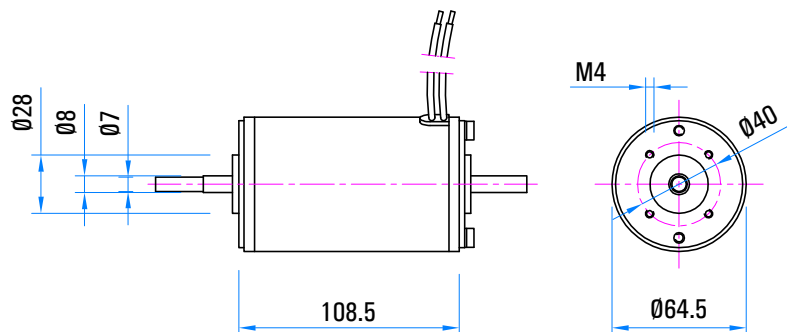
Tipo / Type	Potenza a / Power at	
	1500rpm / 12V	2000rpm / 12V
M 4835	25 W	35 W

Tipo / Type	Potenza a / Power at	
	3000rpm / 24V	4000rpm / 24V
M 4835	50 W	65 W



Tipo / Type	Potenza a / Power at	
	1500rpm / 12V	2000rpm / 12V
M 5946	45 W	60 W

Tipo / Type	Potenza a / Power at	
	3000rpm / 24V	4000rpm / 24V
M 5946	90 W	115 W



# M 7152-M 7255

**Motori C.C. alimentazione da batteria - Potenza da 80W a 345W**  
**D.C. Motors battery supply - Power from 80W to 345W**

## CARATTERISTICHE PRINCIPALI

- Motori C.C. a norme CEI ed IEC.
- M7152/2 poli, M7255/4 poli - magnete permanente.
- Alimentazione da batteria 12V-24V.
- Grado di protezione IP54.
- Isolamento classe F.
- Servizio intermittente.

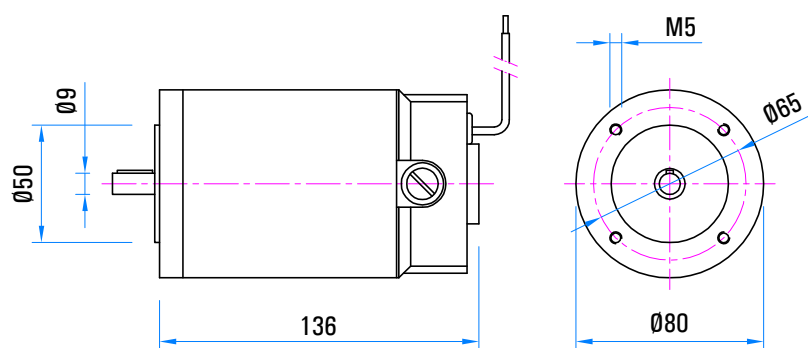
## MAIN FEATURES

- D.C. motors according to CEI and IEC standards.
- M7152/2 poles, M7255/4 poles - permanent magnet.
- Battery supply 12V-24V.
- Degree of protection IP54.
- Insulation F class.
- Intermittent duty.

Motori C.C. alimentazione da batteria  
D.C. Motors battery supply

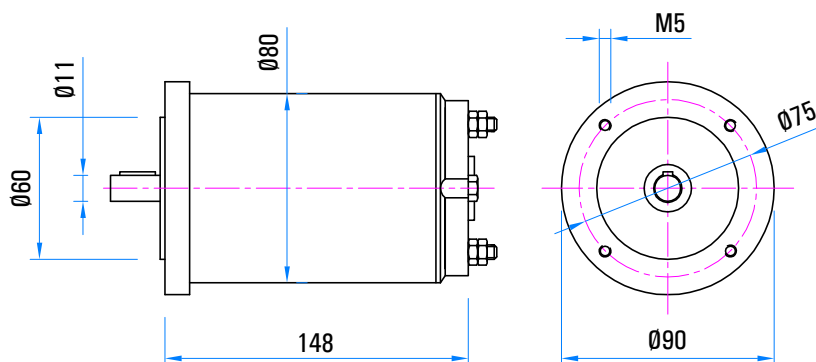
Tipo / Type	Potenza a / Power at	
	1500rpm / 12V	3000rpm / 12V
M 7152	80 W	150 W

Tipo / Type	Potenza a / Power at	
	3000rpm / 24V	
M 7152	165 W	



Tipo / Type	Potenza a / Power at	
	1500rpm / 12V	
M 7255.2	175 W	

Tipo / Type	Potenza a / Power at	
	3000rpm / 24V	
M 7255.2	345 W	



# LN-LV 56

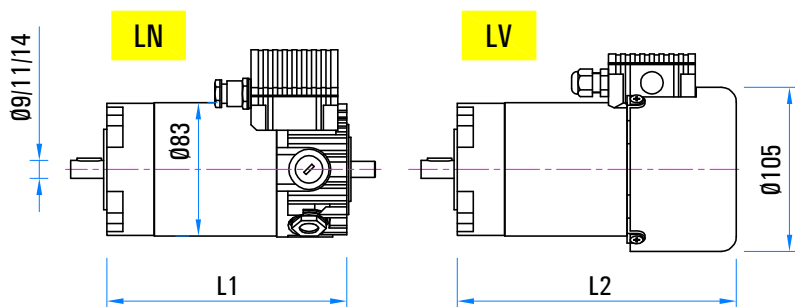
**Motori C.C. alimentazione da batteria - Potenza da 85W a 600W**  
**D.C. Motors battery supply - Power from 85W to 600W**

## CARATTERISTICHE PRINCIPALI

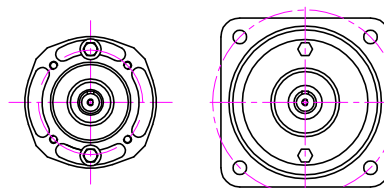
- Motori C.C. a norme CEI ed IEC.
- 2 poli - magnete permanente.
- Alimentazione da batteria 12V-24V-48V.
- Isolamento cl. F e H.
- LN senza ventilazione - grado di protezione IP54.
- LV autoventilato - grado di protezione IP54.
- Scatola morsetti.

## MAIN FEATURES

- D.C. motors according to CEI and IEC standards.
- 2 poles - permanent magnet.
- Battery supply 12V-24V-48V.
- Insulation F and H class.
- LN no ventilated - degree of protection IP54.
- LV self ventilated - degree of protection IP54.
- Terminal box.



IEC 56 B14	Ø80	IEC 56 B5	Ø120
IEC 63 B14	Ø90	IEC 63 B5	105x105
IEC 71 B14	Ø105	IEC 71 B5	120x120



Tipo / Type	L1	Potenza a / Power at		
		1500rpm	2000rpm	3000rpm
LN 56.5	149	85 W	110 W	165 W
LN 56.10	196	165 W	220 W	330 W
LN 56.15	241	250 W	330 W	500 W

Max. 200W a / at 12V - Max. 400W a / at 24V

Tipo / Type	L2	Potenza a / Power at		
		1500rpm	2000rpm	3000rpm
LV 56.5	172	100 W	135 W	200 W
LV 56.10	219	200 W	270 W	400 W
LV 56.15	264	300 W	400 W	600 W

Max. 200W a / at 12V - Max. 400W a / at 24V



## OPZIONI :

- Flange e alberi speciali
- Freno di sicurezza esterno
- Cavo
- Montaggio a piedi (B3) h.63

## OPTIONS :

- Special shafts and flanges
- External safety brake
- Cable
- Feet mounting (B3) h.63



# N 505-N 506

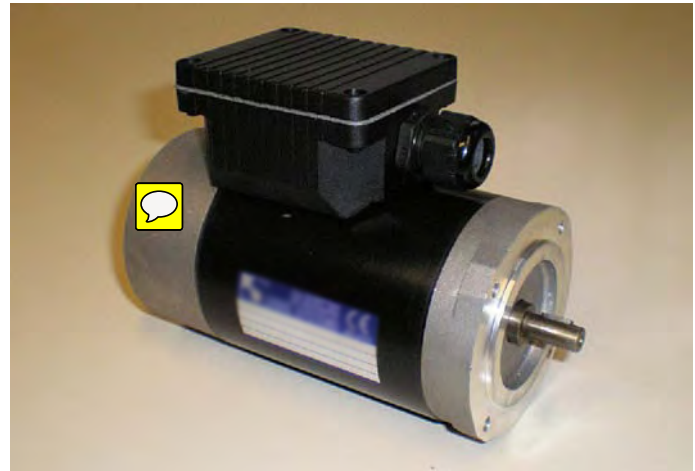
**Motori C.C. alimentazione da batteria - Potenza da 85W a 470W**  
**D.C. Motors battery supply - Power from 85W to 470W**

## CARATTERISTICHE PRINCIPALI

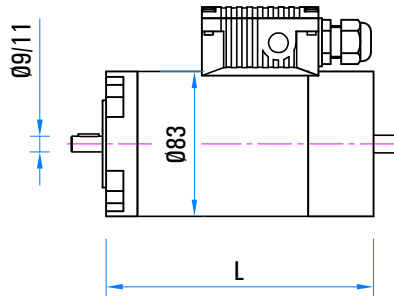
- Motori C.C. a norme CEI ed IEC.
- 4 poli - magnete permanente.
- Alimentazione da batteria 12V-24V-48V.
- Isolamento cl. F e H.
- N505 protezione IP55, N506 protezione IP66.
- Fattore di forma 1 - servizio S1 e S3 - senza ventilazione
- Scatola morsetti.

## MAIN FEATURES

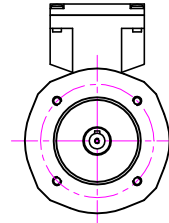
- D.C. motors according to CEI and IEC standards.
- 4 poles - permanent magnet.
- Battery supply 12V-24V-48V.
- Insulation F and H class.
- N505 protection IP55, N506 protection IP66.
- Form factor 1 - duty S1 and S3 - no ventilated.
- Terminal box.



Motori C.C. alimentazione da batteria  
D.C. Motors battery supply



IEC 56 B14 080  
IEC 63 B14 090



### Servizio continuo S1 / Continuous duty S1

Tipo / Type	L	Potenza a / Power at		
		1500rpm	2000rpm	3000rpm
N 505.5	153.5	85 W	115 W	170 W
N 505.10	200.5	170 W	230 W	340 W

### Servizio intermittente S3 / Intermittent duty S3

Tipo / Type	L	Potenza a / Power at		
		1500rpm	2000rpm	3000rpm
N 505.5	153.5	115 W	175 W	235 W
N 505.10	200.5	235 W	310 W	470 W



## OPZIONI :

- Flange e alberi speciali
- Freno di sicurezza esterno IP54

## OPTIONS :

- Special shafts and flanges
- IP54 external safety brake

# LN 70

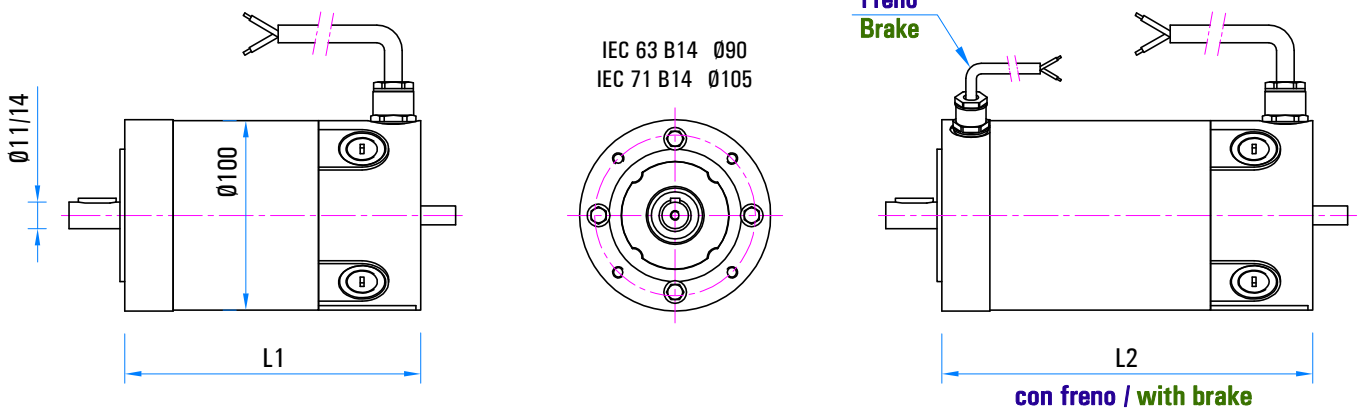
**Motori C.C. alimentazione da batteria - Potenza da 160W a 760W**  
**D.C. Motors battery supply - Power from 160W to 760W**

## CARATTERISTICHE PRINCIPALI

- Motori C.C. a norme CEI ed IEC.
- 4 poli - magnete permanente.
- Alimentazione da batteria 12V-24V-48V.
- Grado di protezione IP54.
- Isolamento classe F e H.
- Cavo.

## MAIN FEATURES

- D.C. motors according to CEI and IEC standards.
- 4 poles - permanent magnet.
- Battery supply 12V-24V-48V.
- Degree of protection IP54.
- Insulation F and H class.
- Cable.



Tipo / Type	L1	L2	1500rpm	Potenza a / Power at 2000rpm	3000rpm
LN 70.5	156.5	187	160 W	215 W	320 W
LN 70.10	206.5	237	270 W	360 W	540 W
LN 70.15	256.5	287	360 W	480 W	760 W

Max. 360W a / at 12V - Max. 760W a / at 24V



## OPZIONI :

- Flange e alberi speciali
- Freno di sicurezza interno o esterno
- Protezione IP66

## OPTIONS :

- Special shafts and flanges
- Inside or external safety brake
- IP66 protection

# M / MV 712-714

**Motori C.C. alimentazione da batteria - Potenza da 180W a 1200W**  
**D.C. Motors battery supply - Power from 180W to 1200W**

## CARATTERISTICHE PRINCIPALI

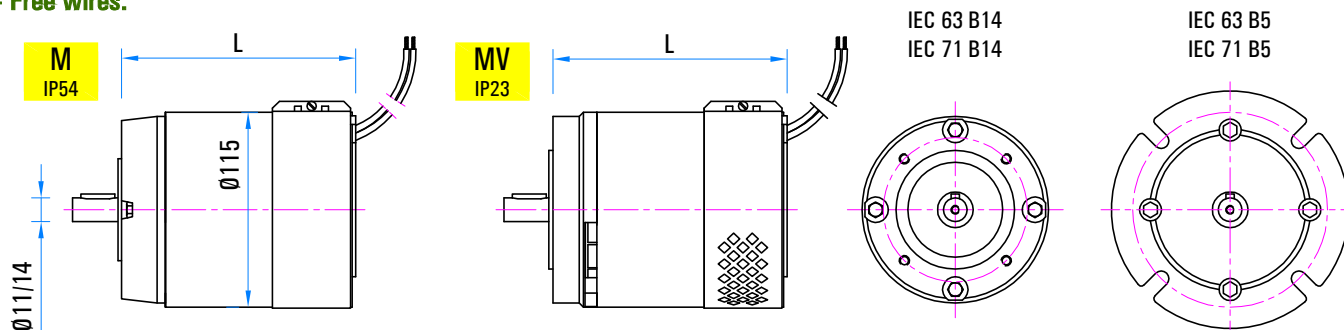
- Motori C.C. a norme CEI ed IEC.
- 2/4 poli - magnete permanente.
- Alimentazione da batteria 12V-24V-48V.
- Isolamento cl. F e H.
- MV autoventilato servizio S1.
- M senza ventilazione servizio S3.
- Fili uscenti.

## MAIN FEATURES

- D.C. motors according to CEI and IEC standards.
- 2/4 poles - permanent magnet.
- Battery supply 12V-24V-48V.
- Insulation F and H class.
- MV self ventilated duty S1.
- M not ventilated duty S3.
- Free wires.



Motori C.C. alimentazione da batteria  
D.C. Motors battery supply



Tipo /Type	L	Potenza a / Power at		
		1500rpm	2000rpm	3000rpm
M-MV 712/714 .3	156	180 W	240 W	360 W
M-MV 712/714 .5	171	250 W	340 W	500 W
M-MV 712/714 .7	186	300 W	400 W	600 W
M-MV 712/714 .9	218	450 W	600 W	850 W
M-MV 712/714 .13	249	600 W	800 W	1200 W

Max. 400W a / at 12V - Max. 850W a / at 24V



## OPZIONI :

- Flange e alberi speciali
- Freno di sicurezza esterno
- Montaggio a piedi (B3) h.63 e h.71
- Protezione IP55
- Connessione con terminali filettati

## OPTIONS :

- Special shafts and flanges
- External safety brake
- Feet mounting (B3) h.63 and h.71
- IP55 protection
- Connection with thread terminals

# N-V 745

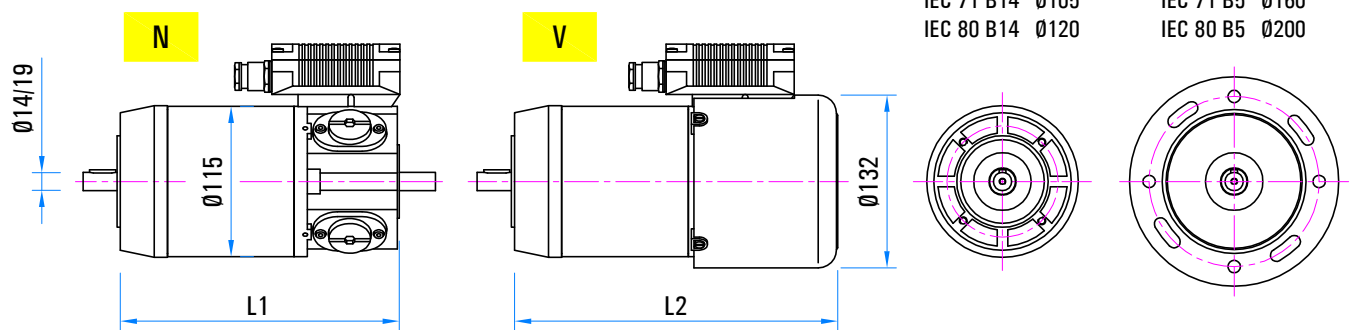
Motori C.C. alimentazione da batteria - Potenza da 0.3kW a 1.8kW  
D.C. Motors battery supply - Power from 0.3kW to 1.8kW

## CARATTERISTICHE PRINCIPALI

- Motori C.C. a norme CEI ed IEC.
- 4 poli - magnete permanente.
- Alimentazione da batteria 12V-24V-48V.
- Isolamento classe F e H.
- N senza ventilazione - grado di protezione IP55.
- V autoventilato - grado di protezione IP55.
- Scatola morsetti.

## MAIN FEATURES

- D.C. motors according to CEI and IEC standards.
- 4 poles - permanent magnet.
- Battery supply 12V-24V-48V.
- Insulation F and H class.
- N no ventilated - degree of protection IP55.
- V self ventilated - degree of protection IP55.
- Terminal box.



Tipo / Type	L1	Potenza a / Power at		
		1500rpm	2000rpm	3000rpm
N 745.6	214	0.3 kW	0.4 kW	0.55 kW
N 745.9	247	0.4 kW	0.55 kW	0.75 kW
N 745.12	277	0.55 kW	0.75 kW	1 kW
N 745.18	337	0.75 kW	1.1 kW	1.3 kW

Max. 0.75kW a / at 12V - Max. 1.5kW a / at 24V

Tipo / Type	L2	Potenza a / Power at		
		1500rpm	2000rpm	3000rpm
V 745.6	248	0.40 kW	0.55 kW	0.75 kW
V 745.9	281	0.55 kW	0.75 kW	1 kW
V 745.12	311	0.75 kW	1 kW	1.3 kW
V 745.18	371	1 kW	1.3 kW	1.8 kW

Max. 0.75kW a / at 12V - Max. 1.5kW a / at 24V



## OPZIONI :

- Flange e alberi speciali
- Freno di sicurezza esterno IP54
- Cavo
- Montaggio a piedi (B3) h.71
- Protezione IP66

## OPTIONS :

- Special shafts and flanges
- IP54 external safety brake
- Cable
- Feet mounting (B3) h.71
- IP66 protection

# N-V 805 / N 806

**Motori C.C. alimentazione da batteria - Potenza da 0.55kW a 2.2kW**  
**D.C. Motors battery supply - Power from 0.55kW to 2.2kW**

## CARATTERISTICHE PRINCIPALI

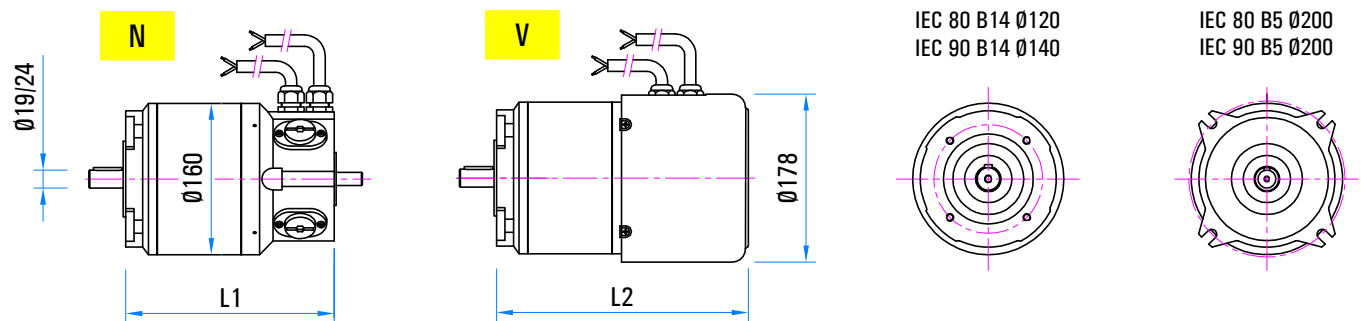
- Motori C.C. a norme CEI ed IEC.
- 4 poli - magnete permanente.
- Alimentazione da batteria 12V + 110V.
- Isolamento classe F e H.
- N/V805 protezione IP55, N806 protezione IP66.
- Uscita cavi.

## MAIN FEATURES

- D.C. motors according to CEI and IEC standards.
- 4 poles - permanent magnet.
- Battery supply 12V + 110V.
- Insulation F and H class.
- N805 protection IP55, N806 protection IP66.
- Free cables.



Motori C.C. alimentazione da batteria  
D.C. Motors battery supply



Tipo / Type	L1	Potenza a / Power at		
		1500rpm	2000rpm	3000rpm
N 805.19	222	0.55 kW	0.75 kW	1.1 kW
N 805.27	252	0.75 kW	1 kW	1.5 kW
N 805.38	277	1.1 kW	1.5 kW	2.2 kW

Max. 1.1kW a / at 12V - Max. 2.2kW a / at 24V

Tipo / Type	L2	Potenza a / Power at		
		1500rpm	2000rpm	3000rpm
V 805.19	267	0.55 kW	0.75 kW	1.1 kW
V 805.27	297	0.75 kW	1 kW	1.5 kW
V 805.38	322	1.1 kW	1.5 kW	2.2 kW

Max. 1.1kW a / at 12V - Max. 2.2kW a / at 24V



## OPZIONI :

- Flange e alberi speciali
- Freno di sicurezza esterno IP54
- Montaggio a piedi (B3) h.90
- Morsettiera (solo su N-V 805)

## OPTIONS :

- Special shafts and flanges
- IP54 external safety brake
- Terminal box (only for N-V 805)

# V 88

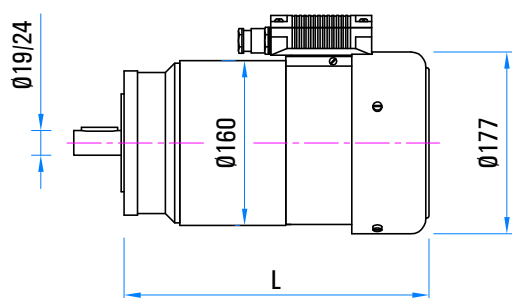
**Motori C.C. alimentazione da batteria - Potenza da 1.2kW a 4.4kW**  
**D.C. Motors battery supply - Power from 1.2kW to 4.4kW**

## CARATTERISTICHE PRINCIPALI

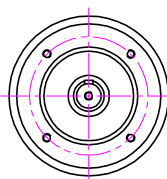
- Motori C.C. a norme CEI ed IEC.
- 4 poli - magnete permanente.
- Alimentazione da batteria 12V + 110V.
- Isolamento classe F e H.
- V autoventilato - grado di protezione IP54.
- Scatola morsetti.

## MAIN FEATURES

- D.C. motors according to CEI and IEC standards.
- 4 poles - permanent magnet.
- Battery supply 12V + 110V.
- Insulation F and H class.
- V self ventilated - degree of protection IP54.
- Terminal box.

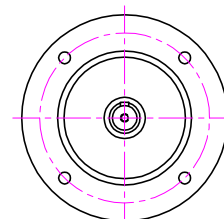


IEC 90 B14 Ø140



IEC 80 B5 Ø200

IEC 90 B5 Ø200



Tipo / Type	L	Potenza a / Power at		
		1500rpm	2000rpm	3000rpm
V 88.38	354	1.2 kW	1.5kW	2.2 kW
V 88.57	409	1.7 kW	2.2 kW	3.3 kW
V 88.81	464	2.2 kW	3 kW	4.4 kW

Max. 1.1kW a / at 12V - Max. 2.2kW a / at 24V - Max. 4.4kW a / at 48V



## OPZIONI :

- Flange e alberi speciali
- Freno di sicurezza esterno
- Montaggio a piedi (B3) h.90

## OPTIONS :

- Special shafts and flanges
- External safety brake
- Feet mounting (B3) h.90

# ME 80-100-112-132

**Motori C.C. in derivazione alim. da batteria - Potenza da 0.38kW a 14kW**  
**Shunt field D.C. motors battery supply - Power from 0.38kW to 14kW**

## CARATTERISTICHE PRINCIPALI

- Motori C.C. a norme CEI ed IEC.
- Eccitazione separata.
- Poli ausiliari su tutte le grandezze.
- Tensione armatura 12V + 110V.
- Protezione IP23 - servizio continuo S1.
- Autoventilati IC01.
- Scatola morsetti o fili uscenti.

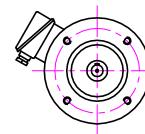
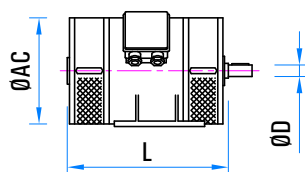
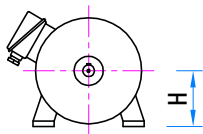
## MAIN FEATURES

- D.C. motors according to CEI and IEC standards.
- Shunt field.
- Interpoles on all sizes.
- Armature voltage 12V + 110V.
- IP23 protection - continuous duty S1.
- Self ventilated IC01.
- Terminal box or free wires.



Tipo / Type	ØAC	L	Potenza a / Power at			
			1400/1600rpm	1800/2200rpm	2300/2700rpm	2800/3200rpm
ME 80 R	157	285	0.38 kW	0.5 kW	0.65 kW	0.75 kW
ME 80 S	157	305	0.5 kW	0.7 kW	0.8 kW	1 kW
ME 100 R	192	310	0.65 kW	0.8 kW	1 kW	1.3 kW
ME 100 S	192	330	0.9 kW	1.2 kW	1.5 kW	1.7 kW
ME 100 T	192	330	1.1 kW	1.4 kW	2 kW	2.6 kW
ME 112 R	220	335	1.7 kW	2.2 kW	2.5 kW	3.2 kW
ME 112 S	220	335	2.3 kW	2.7 kW	3.2 kW	4 kW
ME 112 T	220	375	2.5 kW	3.3 kW	4 kW	4.7 kW
ME 112 L	220	405	2.8 kW	3.8 kW	4.5 kW	5.5 kW
ME 132 R	260	390	3.7 kW	5.2 kW	6.2 kW	8 kW
ME 132 S	260	415	4.8 kW	6.4 kW	7 kW	9 kW
ME 132 T	260	440	6 kW	8 kW	9 kW	10 kW
ME 132 L	260	480	8 kW	10 kW	12 kW	14 kW

**DATI PROVVISORI. Richiedere aggiornamento in fase di scelta del prodotto/ PROVISIONAL DATA. Contact us for the updates**



IEC B5	IEC B14
71	-
80	-
90	-
100	100
112	112
132	132

Tipo / Type	ØD	H
ME 80	14-16-19	80
ME 100	19-24	100
ME 112	24-28	112
ME 132	28-38	132

## OPZIONI :

- Flange e alberi speciali
- Freno di sicurezza esterno
- Protezione IP54 o IP55

## OPTIONS :

- Special shafts and flanges
- External safety brake
- IP54 or IP55 protection

Motori C.C. in derivazione alimentazione da batteria  
Shunt field D.C. motors battery supply

# Motori C.C. alimentazione da SCR o PWM

## D.C. Motors SCR or PWM supply

Motori C.C. alimentazione da SCR o PWM  
D.C. Motors SCR or PWM supply



Potenza da 75W a 4500W

Power from 75W to 4500W



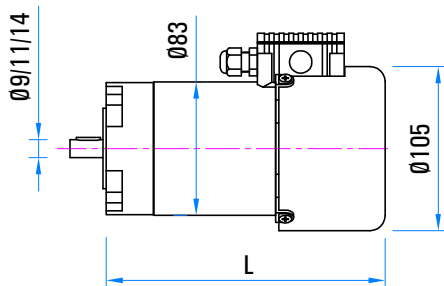
## Motori C.C. alimentazione da SCR o PWM - Potenza da 75W a 540W D.C. Motors SCR or PWM supply - Power from 75W to 540W

### CARATTERISTICHE PRINCIPALI

- Motori C.C. a norme CEI ed IEC.
- 2 poli - magnete permanente.
- Tensione nominale 170V.
- Servizio continuo S1 - fattore di forma 1.05 / 1.4.
- LV autoventilato - grado di protezione IP54.
- Scatola morsetti.

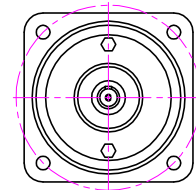
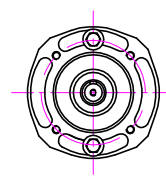
### MAIN FEATURES

- D.C. motors according to CEI and IEC standards.
- 2 poles - permanent magnet.
- Rated voltage 170V.
- Continuous duty S1 - form factor 1.05 / 1.4.
- LV self ventilated - degree of protection IP54.
- Terminal box.



IEC 56 B14 Ø80  
IEC 63 B14 Ø90  
IEC 71 B14 Ø105

IEC 56 B5 Ø120  
IEC 63 B5 105x105  
IEC 71 B5 120x120



Tipo / Type	L	Potenza a / Power at		
		1500rpm	2000rpm	3000rpm
LV 60 A	172	75 W	100 W	150 W
LV 60 B	219	150 W	200 W	300 W
LV 60 C	264	225 W	300 W	450 W

Tipo / Type	L	Potenza a / Power at		
		1500rpm	2000rpm	3000rpm
LV 60 A	172	90 W	135 W	180 W
LV 60 B	219	180 W	240 W	360 W
LV 60 C	264	270 W	360 W	540 W



### OPZIONI :

- Flange e alberi speciali
- Freno di sicurezza esterno
- Cavo
- Montaggio a piedi (B3) h.63

### OPTIONS :

- Special shafts and flanges
- External safety brake
- Cable
- Feet mounting (B3) h.63

# LV-AV 72

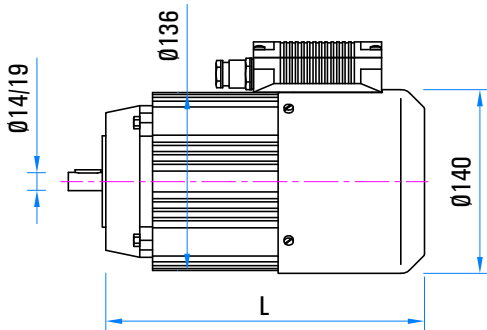
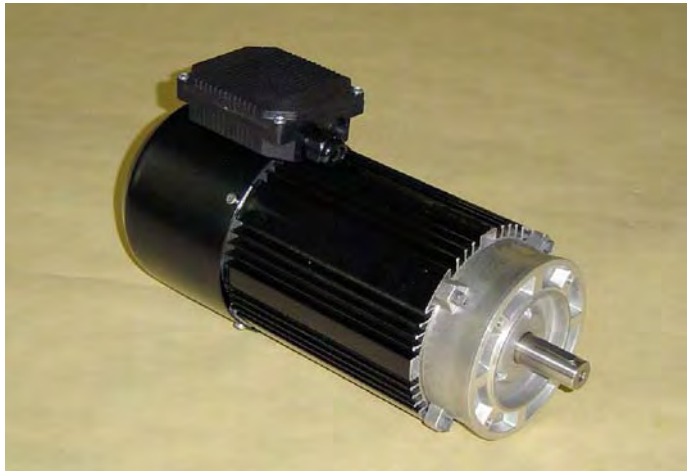
**Motori C.C. alimentazione da SCR o PWM - Potenza da 0.25kW a 1.8kW**  
**D.C. Motors SCR or PWM supply - Power from 0.25kW to 1.8kW**

## CARATTERISTICHE PRINCIPALI

- Motori C.C. a norme CEI ed IEC.
- 2 poli - magnete permanente.
- Tensione nominale 170V.
- Servizio continuo S1 - fattore di forma 1.05 / 1.4.
- Autoventilato - grado di protezione IP54.
- Scatola morsetti.

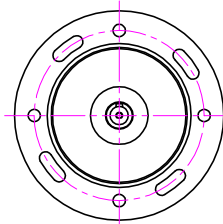
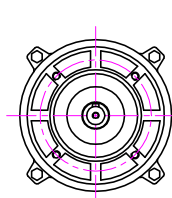
## MAIN FEATURES

- D.C. motors according to CEI and IEC standards.
- 2 poles - permanent magnet.
- Rated voltage 170V.
- Continuous duty S1 - form factor 1.05 / 1.4.
- Self ventilated - degree of protection IP54.
- Terminal box.



IEC 71 B14  
IEC 80 B14

IEC 71 B5  
IEC 80 B5



Tipo / Type	L	Potenza a / Power at							
		1500rpm	2000rpm	3000rpm					
LV /AV 72 B	245	FF = 1.4	0.25 kW	0.335 kW	0.5 kW	FF = 1.05	0.315 kW	0.42 kW	0.63 kW
LV /AV 72 C	278		0.36 kW	0.48 kW	0.72 kW		0.45 kW	0.6 kW	0.9 kW
LV /AV 72 D	308		0.49 kW	0.655 kW	0.98 kW		0.63 kW	0.84 kW	1.26 kW
LV /AV 72 E	368		0.675 kW	0.9 kW	1.35 kW		0.9 kW	1.2 kW	1.8 kW



## OPZIONI :

- Flange e alberi speciali
- Freno di sicurezza esterno
- Cavo
- Montaggio a piedi (B3) h.71

## OPTIONS :

- Special shafts and flanges
- External safety brake
- Cable
- Feet mounting (B3) h.71

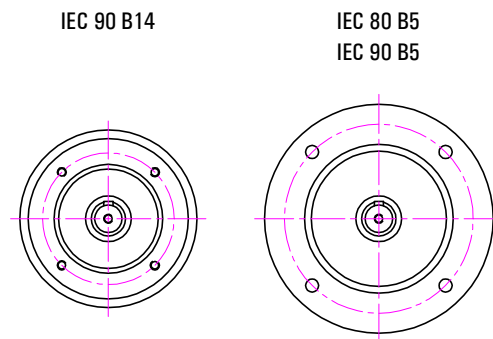
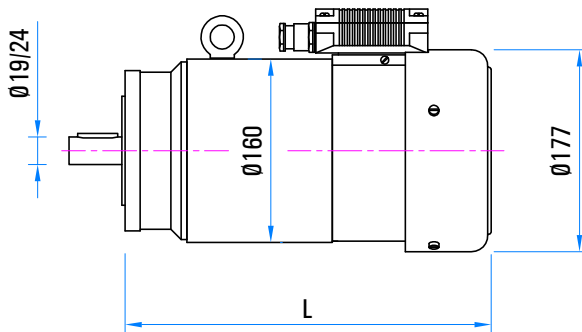
## Motori C.C. alimentazione da SCR o PWM - Potenza da 0.9kW a 4.5kW D.C. Motors SCR or PWM supply - Power from 0.9kW to 4.5kW

### CARATTERISTICHE PRINCIPALI

- Motori C.C. a norme CEI ed IEC.
- 2 poli - magnete permanente.
- Tensione nominale 170V-260V.
- Servizio continuo S1 - fattore di forma 1.05 / 1.4.
- Autoventilato - grado di protezione IP54.
- Scatola morsetti.

### MAIN FEATURES

- D.C. motors according to CEI and IEC standards.
- 2 poles - permanent magnet.
- Rated voltage 170V-260V.
- Continuous duty S1 - form factor 1.05 / 1.4.
- Self ventilated - degree of protection IP54.
- Terminal box.



Tipo / Type	L	FF=1.4	Potenza a / Power at			FF=1.05	Potenza a / Power at		
			1500rpm	2000rpm	3000rpm		1500rpm	2000rpm	3000rpm
DS 66.38	354		0.9 kW	1.2 kW	1.8 kW		1.15 kW	1.53 kW	2.3 kW
DS 66.57	409		1.3 kW	1.73 kW	2.6 kW		1.7 kW	2.26 kW	3.4 kW
DS 66.81	464		1.65 kW	2.2 kW	3.3 kW		2.25 kW	3 kW	4.5 kW



### OPZIONI :

- Flange e alberi speciali
- Freno di sicurezza esterno
- Cavo
- Montaggio a piedi (B3) h.90

### OPTIONS :

- Special shafts and flanges
- External safety brake
- Cable
- Feet mounting (B3) h.90

# Motori C.C. eccitazione separata

## Shunt field D.C. motors



Motori C.C. eccitazione separata  
Shunt field D.C. motors

Potenza da 0.18kW a 18.4kW

Power from 0.18kW to 18.4kW

# ME 80-100-112-132

IC01

**Motori C.C. eccitazione separata - Potenza da 0.38kW a 14.7kW**  
**Shunt field D.C. motors - Power from 0.38kW to 14.7kW**

## CARATTERISTICHE PRINCIPALI

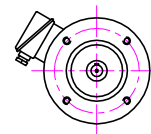
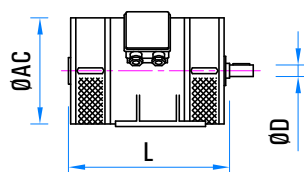
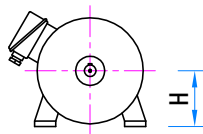
- Motori C.C. a norme CEI ed IEC.
- Eccitazione separata con serie stabilizzatrice.
- Poli ausiliari su tutte le grandezze.
- Tensione armatura 170V-290V-400V-440V.
- Protezione IP23 - servizio continuo S1.
- Autoventilati IC01.
- Scatola morsetti.

## MAIN FEATURES

- D.C. motors according to CEI and IEC standards.
- Shunt field with series stabilizer.
- Interpoles on all sizes.
- Armature voltage 170V-290V-400V-440V.
- IP23 protection - continuous duty S1.
- Self ventilated IC01.
- Terminal box.



Tipo / Type	ØAC	L	Potenza a / Power at			Potenza a / Power at		
			1500rpm	2000rpm	3000rpm	1500rpm	2000rpm	3000rpm
ME 80 R	157	285	0.38 kW	0.5 kW	0.75 kW	-	-	-
ME 80 S	157	305	0.5 kW	0.67 kW	1 kW	-	-	-
ME 100 R	192	310	0.65 kW	0.87 kW	1.3 kW	0.75 kW	1 kW	1.5 kW
ME 100 S	192	330	0.9 kW	1.25 kW	1.8 kW	1 kW	1.3 kW	2 kW
ME 100 T	192	330	1.1 kW	1.5 kW	2.2 kW	1.25 kW	1.7 kW	2.5 kW
ME 112 R	220	335	1.5 kW	2 kW	3 kW	1.7 kW	2.2 kW	3.2 kW
ME 112 S	220	335	1.85 kW	2.5 kW	3.7 kW	2.1 kW	2.7 kW	4 kW
ME 112 T	220	375	2.2 kW	2.9 kW	4.4 kW	2.5 kW	3.3 kW	4.9 kW
ME 112 L	220	405	2.6 kW	3.4 kW	5.1 kW	2.8 kW	3.8 kW	5.6 kW
ME 132 R	260	390	3.2 kW	4.2 kW	6.3 kW	3.7 kW	5.2 kW	7.4 kW
ME 132 S	260	415	4.1 kW	5.5 kW	8.2 kW	4.8 kW	6.4 kW	9.6 kW
ME 132 T	260	440	5 kW	6.8 kW	-	5.9 kW	8.1 kW	11.8 kW
ME 132 L	260	480	6.2 kW	-	-	7.35 kW	10.3 kW	14.7 kW



IEC B5	IEC B14
71	-
80	-
90	-
100	100
112	112
132	132

Tipo / Type	ØD	H
ME 80	14-16-19	80
ME 100	19-24	100
ME 112	24-28	112
ME 132	28-38	132

## OPZIONI :

- Flange e alberi speciali
- Dinamo e/o encoder
- Freno di sicurezza
- Fili uscenti

## OPTIONS :

- Special shafts and flanges
- Tacho and/or encoder
- Safety brake
- Free wires

## Motori C.C. eccitazione separata - Potenza da 0.44kW a 18.4kW Shunt field D.C. motors - Power from 0.44kW to 18.4kW

### CARATTERISTICHE PRINCIPALI

- Motori C.C. a norme CEI ed IEC.
- Eccitazione separata con serie stabilizzatrice.
- Poli ausiliari su tutte le grandezze.
- Tensione armatura 170V-290V-400V-440V.
- Protezione IP23 (IP54 per IC37)- servizio continuo S1.
- Servoventilati IC06 da ventilatore addossato.
- Servoventilati IC17/IC37 da ventilatore esterno.

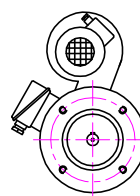
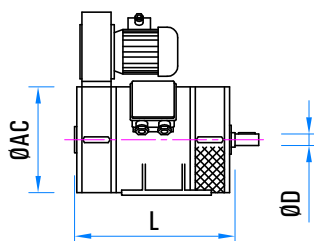
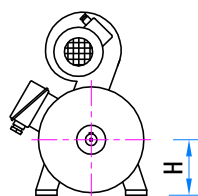
### MAIN FEATURES

- D.C. motors according to CEI and IEC standards.
- Shunt field with series stabilizer.
- Interpoles on all sizes.
- Armature voltage 170V-290V-400V-440V.
- IP23 protection (IP54 for IC37)- continuous duty S1.
- Force ventilated IC06 by blower on the motor.



Motori C.C. eccitazione separata  
Shunt field D.C. motors

Tipo / Type	ØAC	L	Potenza a / Power at			Potenza a / Power at		
			1500rpm	2000rpm	3000rpm	1500rpm	2000rpm	3000rpm
ME 80 R	157	285	0.44 kW	0.6 kW	0.88 kW	-	-	-
ME 80 S	157	305	0.6 kW	0.74 kW	1.1 kW	-	-	-
ME 100 R	192	310	0.74 kW	1 kW	1.5 kW	-	-	-
ME 100 S	192	330	1 kW	1.3 kW	2 kW	-	-	-
ME 100 T	192	330	1.25 kW	1.6 kW	2.4 kW	-	-	-
ME 112 R	220	335	1.6 kW	2.2 kW	3.2 kW	1.8 kW	2.5 kW	3.7 kW
ME 112 S	220	335	2.1 kW	2.7 kW	4 kW	2.35 kW	3.1 kW	4.6 kW
ME 112 T	220	375	2.4 kW	3.2 kW	4.9 kW	2.8 kW	3.7 kW	5.6 kW
ME 112 L	220	405	2.8 kW	3.7 kW	5.6 kW	3.1 kW	4.2 kW	6.25 kW
ME 132 R	260	390	3.3 kW	4.7 kW	6.7 kW	4.4 kW	5.5 kW	8.1 kW
ME 132 S	260	415	-	-	-	5.2 kW	6.7 kW	10.3 kW
ME 132 T	260	440	-	-	-	6.6 kW	8.8 kW	13.2 kW
ME 132 L	260	480	-	-	-	9.6 kW	12.5 kW	18.4 kW



IEC B5	IEC B14
71	-
80	-
90	-
100	100
112	112
132	132

Tipo / Type	ØD	H
ME 80	14-16-19	80
ME 100	19-24	100
ME 112	24-28	112
ME 132	28-38	132

### OPZIONI :

- Flange e alberi speciali
- Dinamo e/o encoder
- Freno di sicurezza
- Fili uscenti

### OPTIONS :

- Special shafts and flanges
- Tacho and/or encoder
- Safety brake
- Free wires

## Motori C.C. eccitazione separata - Potenza da 0.18kW a 6.6kW Shunt field D.C. motors - Power from 0.18kW to 6.6kW

### CARATTERISTICHE PRINCIPALI

- Motori a norme CEI ed IEC.
- Eccitazione separata con serie stabilizzatrice.
- Poli ausiliari su tutte le grandezze.
- Tensione armatura 170V-290V-400V-440V.
- Protezione IP54/IP55 - servizio continuo S1.
- Senza ventilazione IC410.
- Scatola morsetti.

### MAIN FEATURES

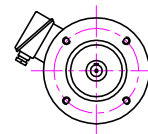
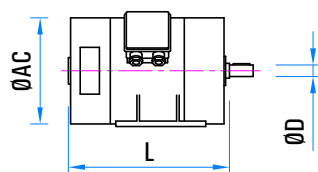
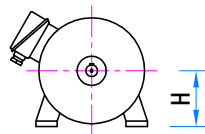
- D.C. motors according to CEI and IEC standards.
- Shunt field with series stabilizer.
- Interpoles on all sizes.
- Armature voltage 170V-290V-400V-440V.
- IP54/IP55 protection - continuous duty S1.
- No ventilated IC410.
- Terminal box.



Tipo / Type	ØAC	L	Potenza a / Power at		
			1500rpm	2000rpm	3000rpm
ME 80 R	157	285	0.18 kW	0.25 kW	0.37 kW
ME 80 S	157	305	0.22 kW	0.3 kW	0.44 kW
ME 100 R	192	310	0.37 kW	0.51 kW	0.74 kW
ME 100 S	192	330	0.44 kW	0.6 kW	0.88 kW
ME 100 T	192	330	0.6 kW	0.74 kW	1.1 kW
ME 112 R	220	335	0.74 kW	1 kW	1.5 kW
ME 112 S	220	335	0.96 kW	1.25 kW	1.8 kW
ME 112 T	220	375	1.1 kW	1.5 kW	2.2 kW
ME 112 L	220	405	1.27 kW	1.7 kW	2.5 kW
ME 132 R	260	390	1.5 kW	2 kW	4 kW
ME 132 S	260	415	1.8 kW	2.4 kW	3.7 kW
ME 132 T	260	440	2.35 kW	3.2 kW	4.8 kW
ME 132 L	260	480	2.8 kW	3.7 kW	5.6 kW

Tipo / Type	ØAC	L	Potenza a / Power at		
			1500rpm	2000rpm	3000rpm
ME 80 R	157	285	-	-	-
ME 80 S	157	305	-	-	-
ME 100 R	192	310	-	-	-
ME 100 S	192	330	-	-	-
ME 100 T	192	330	-	-	-
ME 112 R	220	335	-	-	-
ME 112 S	220	335	-	-	-
ME 112 T	220	375	-	-	-
ME 112 L	220	405	1.5 kW	2 kW	2.9 kW
ME 132 R	260	390	1.7 kW	2.3 kW	3.4 kW
ME 132 S	260	415	2.1 kW	2.9 kW	4.3 kW
ME 132 T	260	440	2.7 kW	3.6 kW	5.4 kW
ME 132 L	260	480	3.3 kW	4 kW	6.6 kW



IEC B5	IEC B14
71	-
80	-
90	-
100	100
112	112
132	132

Tipo / Type	ØD	H
ME 80	14-16-19	80
ME 100	19-24	100
ME 112	24-28	112
ME 132	28-38	132

### OPZIONI :

- Flange e alberi speciali
- Dinamo e/o encoder
- Freno di sicurezza
- Fili uscenti

### OPTIONS :

- Special shafts and flanges
- Tacho and/or encoder
- Safety brake
- Free wires

# Riduttori epicicloidali e vite senza fine

## Planet and worm gears



**Coppia da 5Nm a 250Nm**  
**Torque from 5Nm to 250Nm**

Riduttori epicicloidali e vite senza fine  
Planet and worm gear



## Riduttore epicicloidale - Coppia da 6Nm a 18Nm Planet gear - Torque from 6Nm to 18Nm

### CARATTERISTICHE PRINCIPALI

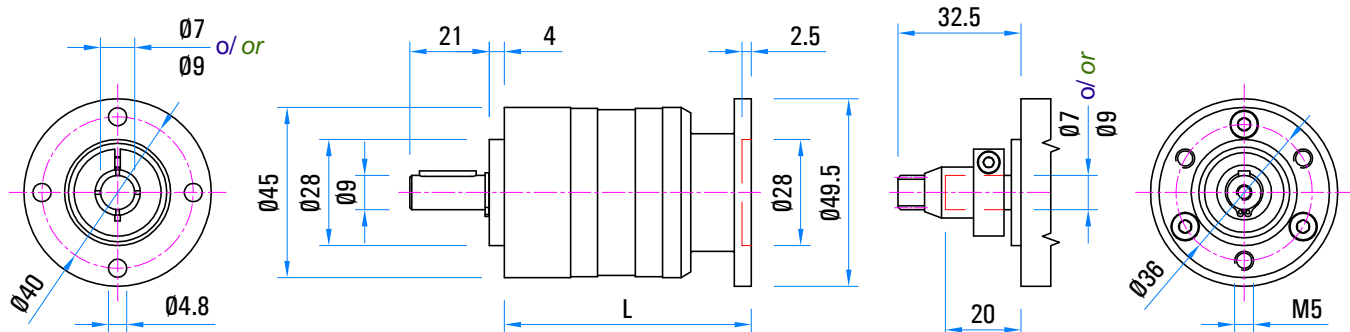
- Rapporti interi.
- Rigidità torsionale.
- Capacità di assorbimento ai sovraccarichi.
- Bassa inerzia.
- Lubrificazione a grasso.
- Assemblaggio con calettatore.

### MAIN FEATURES

- Whole ratios.
- Torsion stiffness.
- Overload absorption capacity.
- Low inertia.
- Grease lubrication.
- Assembly with shrink disc.



Tipo / Type	Rapporti / Ratios	Coppia nominale / Rated torque	L
PL 45	4 - 6	6 Nm	52.8
	16 - 24 - 36	12 Nm	65.3
	64 - 96 - 144 - 216	18 Nm	77.8



### OPZIONI :

- Flange e alberi speciali

### OPTIONS :

- Special shafts and flanges

# PL 52

Riduttore epicicloidale - Coppia da 10Nm a 30Nm

Planet gear - Torque from 10Nm to 30Nm

## CARATTERISTICHE PRINCIPALI

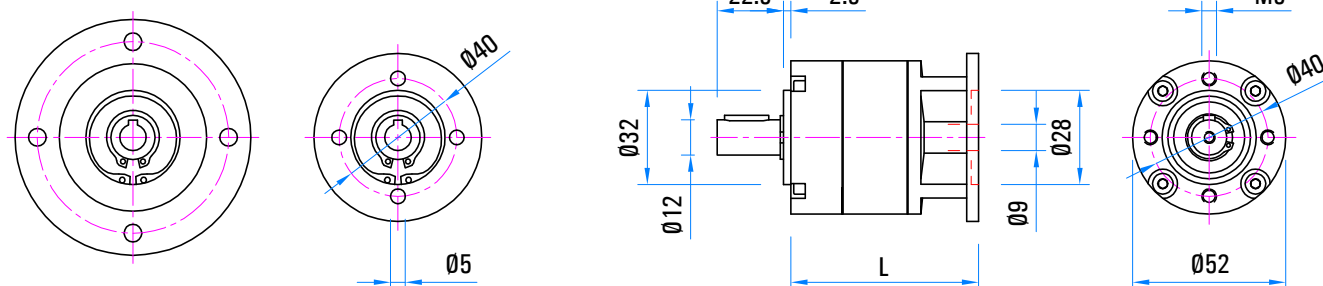
- Rapporti interi.
- Rigidità torsionale.
- Capacità di assorbimento ai sovraccarichi
- Bassa inerzia.
- Lubrificazione a grasso.
- Assemblaggio con chiave.

## MAIN FEATURES

- Whole ratios.
- Torsion stiffness.
- Overload absorption capacity.
- Low inertia.
- Grease lubrication.
- Assembly with keynut.



PAM 56 B14



Tipo / Type	Rapporti / Ratios	Coppia nominale / Rated torque	L
PL 52 C	4 - 6	10 Nm	64
	16 - 24 - 36	20 Nm	80.5
	64 - 96 - 144 - 216	30 Nm	97

## OPZIONI :

- Flange e alberi speciali

## OPTIONS :

- Special shafts and flanges



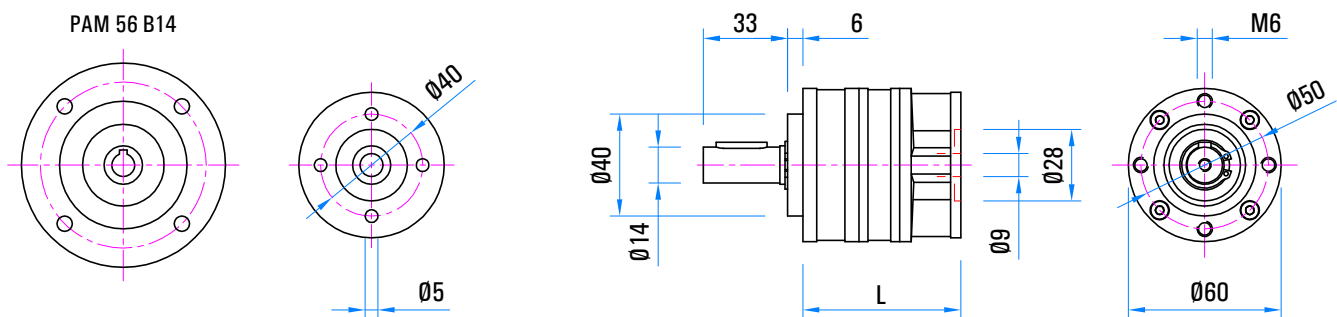
## Riduttore epicicloidale - Coppia da 12Nm a 40Nm Planet gear - Torque from 12Nm to 40Nm

### CARATTERISTICHE PRINCIPALI

- Rapporti interi.
- Rigidità torsionale.
- Capacità di assorbimento ai sovraccarichi
- Bassa inerzia.
- Lubrificazione a grasso.
- Assemblaggio con spina (PL60S).
- Assemblaggio con chiavetta (PL60C).

### MAIN FEATURES

- Whole ratios.
- Torsion stiffness.
- Overload absorption capacity.
- Low inertia.
- Grease lubrication.
- Assemblage with pin (PL60S).
- Assembly with keynut (PL60C).



Tipo / Type	Rapporti / Ratios	Coppia nominale / Rated torque	L
PL 60 S	4 - 6	12 Nm	62
	16 - 24 - 36	26 Nm	78
PL 60 C	64 - 96 - 144 - 216	40 Nm	94



### OPZIONI :

- Flange e alberi speciali

### OPTIONS :

- Special shafts and flanges

# PL 80

Riduttore epicicloidale - Coppia da 25Nm a 80Nm

Planet gear - Torque from 25Nm to 80Nm

## CARATTERISTICHE PRINCIPALI

- Rapporti interi.
- Rigidità torsionale.
- Capacità di assorbimento ai sovraccarichi
- Bassa inerzia.
- Lubrificazione a grasso.
- Assemblaggio con chiave.

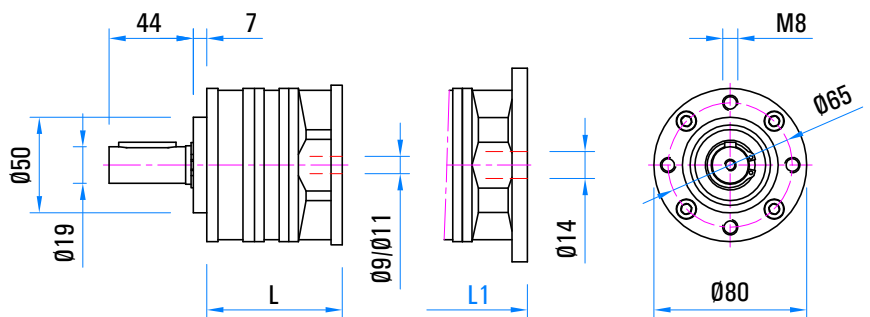
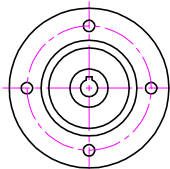
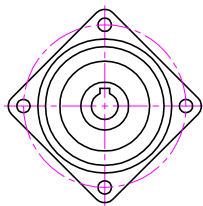
## MAIN FEATURES

- Whole ratios.
- Torsion stiffness.
- Overload absorption capacity.
- Low inertia.
- Grease lubrication.
- Assembly with keynut.



PAM 71 B14

PAM 56 B14  
PAM 63 B14



Tipo / Type	Rapporti / Ratios	Coppia nominale / Rated torque	L	L1
PL 80 C	4 - 6	25 Nm	71	77
	16 - 24 - 36	50 Nm	89	95
	64 - 96 - 144 - 216	80 Nm	107	113

Riduttori epicicloidali e vite senza fine  
Planet and worm gear



## OPZIONI :

- Flange e alberi speciali

## OPTIONS :

- Special shafts and flanges

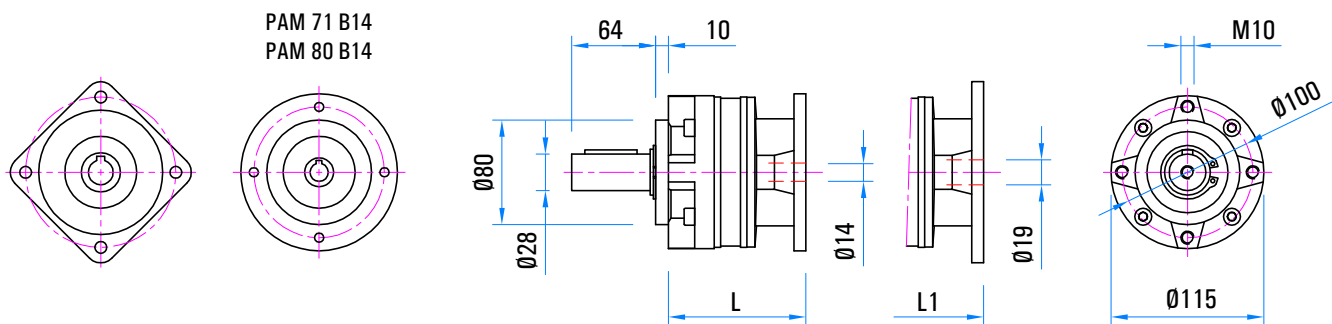
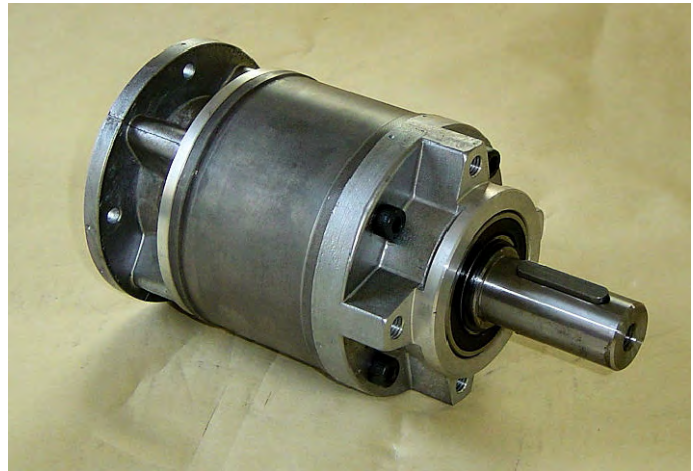
## Riduttore epicicloidale - Coppia da 70Nm a 250Nm Planet gear - Torque from 70Nm to 250Nm

### CARATTERISTICHE PRINCIPALI

- Rapporti interi.
- Rigidità torsionale.
- Capacità di assorbimento ai sovraccarichi
- Bassa inerzia.
- Lubrificazione a grasso.
- Assemblaggio con chiave.

### MAIN FEATURES

- Whole ratios.
- Torsion stiffness.
- Overload absorption capacity.
- Low inertia.
- Grease lubrication.
- Assembly with keynut.



PAM 71 B14  
PAM 80 B14

Tipo / Type	Rapporti / Ratios	Coppia nominale / Rated torque	L	L1
PL 115 C	4 - 6	70 Nm	97	105
	16 - 24 - 36	160 Nm	122	130
	64 - 96 - 144 - 216	250 Nm	147	155



### OPZIONI :

- Flange e alberi speciali

### OPTIONS :

- Special shafts and flanges

# R 25

Riduttore vite senza fine - Coppia da 5Nm a 8Nm

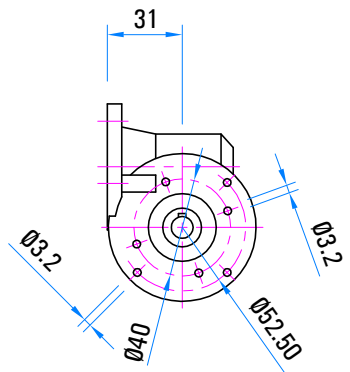
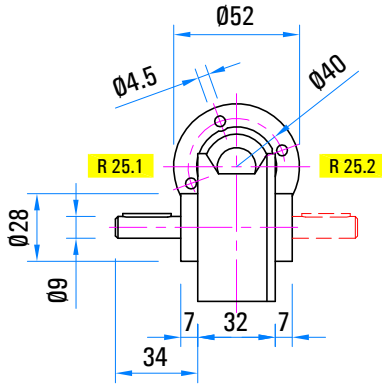
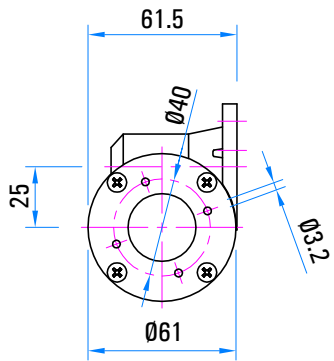
Worm gear - Torque from 5Nm to 8Nm

## CARATTERISTICHE PRINCIPALI

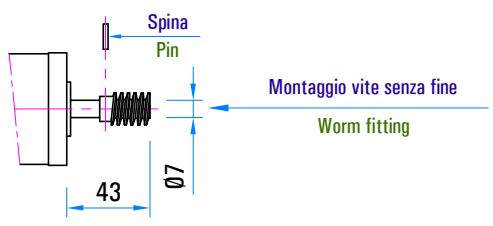
- Qualsiasi posizione di montaggio
- Vite in acciaio trattato.
- Corona in bronzo speciale.
- Cassa in alluminio ad alta resistenza.
- Lubrificazione a grasso.
- Assemblaggio con spina.

## MAIN FEATURES

- All mounting positions.
- Treat steel worm.
- Special bronze wheel.
- High strength aluminium casing.
- Grease lubrication.
- Assembly with pin.



Tipo Type	Rapporti Ratios	Coppia nominale Rated torque
R 25	5	8 Nm
	10	8 Nm
	20	7 Nm
	30	6 Nm
	50	5 Nm



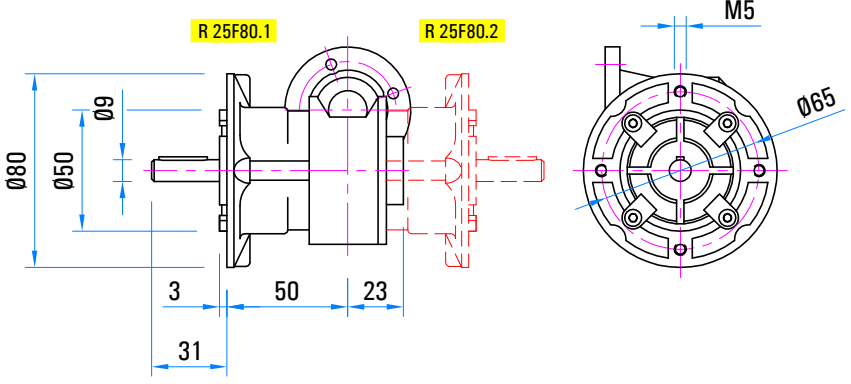
Con flangia / With flange

## OPZIONI :

- R25.3 : Albero in uscita bisporgente.

## OPTIONS :

- R25.3 : Double-end output shaft



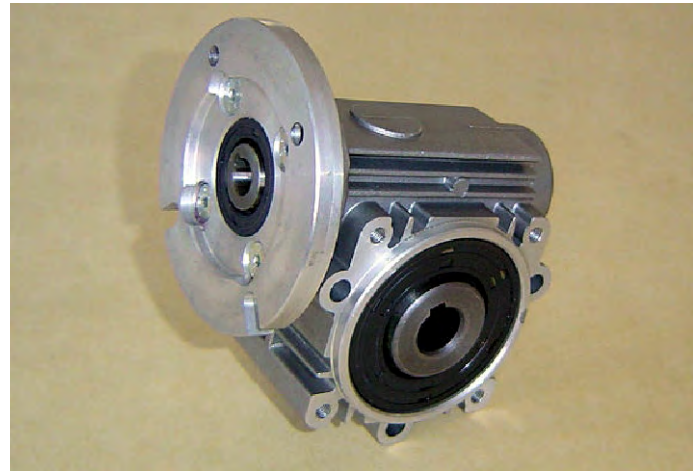
## Riduttore vite senza fine - Coppia da 12Nm a 21Nm Worm gear - Torque from 12Nm to 21Nm

### CARATTERISTICHE PRINCIPALI

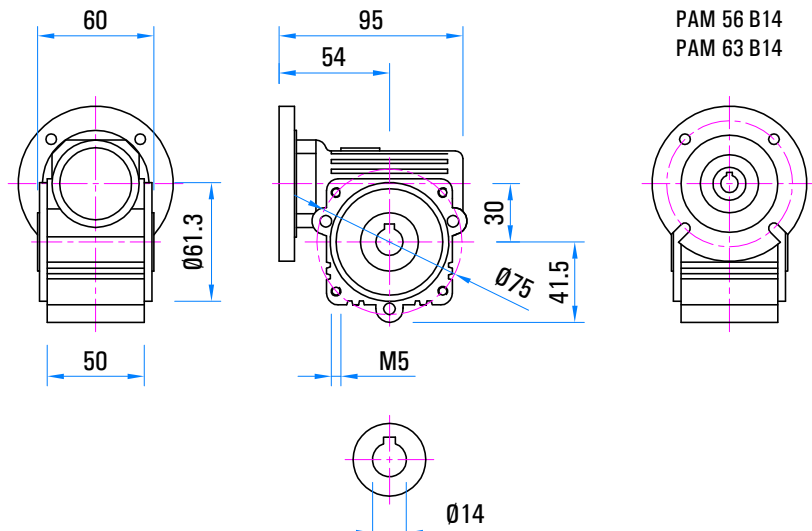
- Qualsiasi posizione di montaggio
- Vite in acciaio trattato.
- Corona in bronzo speciale.
- Cassa in alluminio ad alta resistenza.
- Lubrificazione ad olio.
- Assemblaggio con chiave.

### MAIN FEATURES

- All mounting positions.
- Treat steel worm.
- Special bronze wheel.
- High strength aluminium casing.
- Oil lubrication.
- Assembly with keynut.



Tipo Type	Rapporti Ratios	Coppia nominale Rated torque
BW 30	7	19 Nm
	10	20 Nm
	15 - 20 - 25	21 Nm
	30	17 Nm
	40	16 Nm
	50	14 Nm
	60	16 Nm
	70	12 Nm
	80	13 Nm
	100	12 Nm



### OPZIONI :

- Flangia in uscita
- Albero in uscita mono o bisporgente
- Montaggio a piedi

### OPTIONS :

- Output flange
- Single or double-end output shaft
- Feet mounting

# BW 40

Riduttore vite senza fine - Coppia da 32Nm a 58Nm

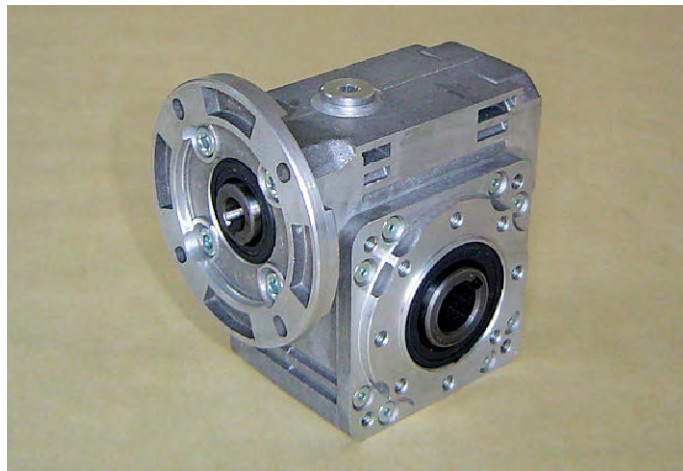
Worm gear - Torque from 32Nm to 58Nm

## CARATTERISTICHE PRINCIPALI

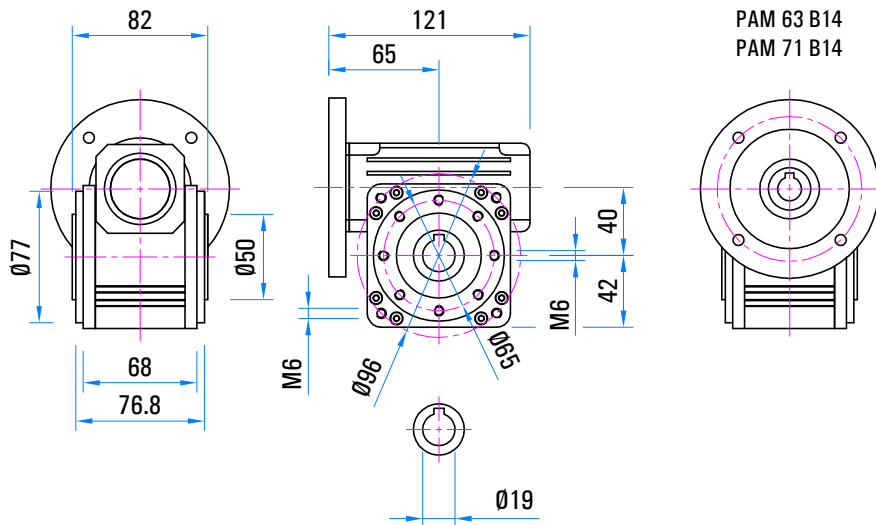
- Qualsiasi posizione di montaggio
- Vite in acciaio trattato.
- Corona in bronzo speciale.
- Cassa in alluminio ad alta resistenza.
- Lubrificazione ad olio.
- Assemblaggio con chiave.

## MAIN FEATURES

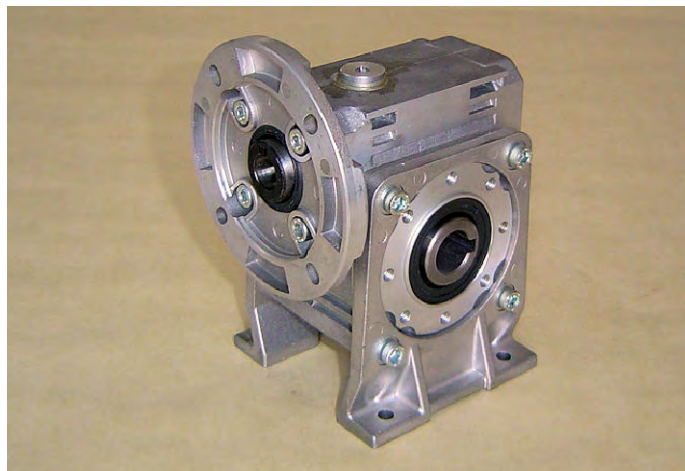
- All mounting positions.
- Treat steel worm.
- Special bronze wheel.
- High strength aluminium casing.
- Oil lubrication.
- Assembly with keynut.



Tipo Type	Rapporti Ratios	Coppia nominale Rated torque
BW 40	7	46 Nm
	10 - 15	52 Nm
	20	47 Nm
	25 - 30	58 Nm
	40	50 Nm
	50	47 Nm
	60	39 Nm
	70	34 Nm
	80	33 Nm
	100	32 Nm



Riduttori epicicloidali e vite senza fine  
Planet and worm gear



## OPZIONI :

- Flangia in uscita
- Albero in uscita mono o bisporgente
- Montaggio a piedi

## OPTIONS :

- Output flange
- Single or double-end output shaft
- Feet mounting



## Riduttore vite senza fine - Coppia da 51Nm a 96Nm Worm gear - Torque from 51Nm to 96Nm

### CARATTERISTICHE PRINCIPALI

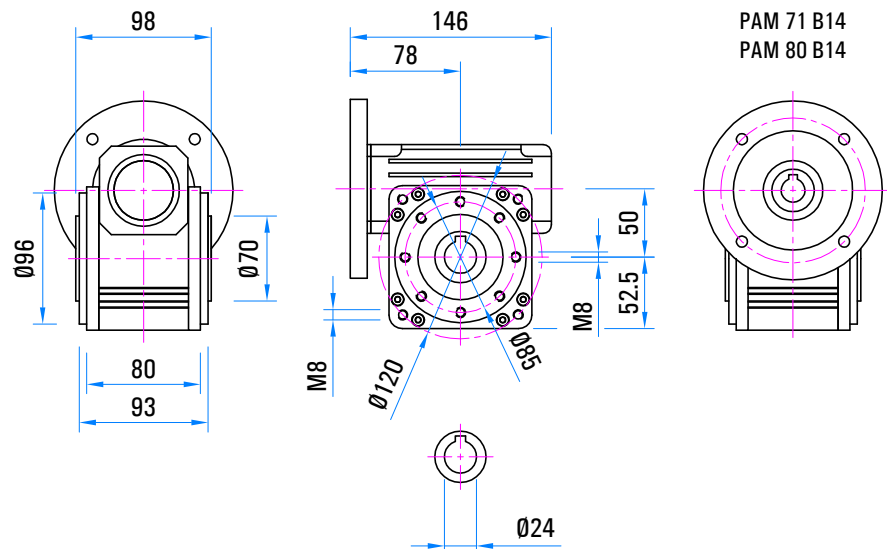
- Qualsiasi posizione di montaggio
- Vite in acciaio trattato.
- Corona in bronzo speciale.
- Cassa in alluminio ad alta resistenza.
- Lubrificazione ad olio.
- Assemblaggio con chiavetta.

### MAIN FEATURES

- All mounting positions.
- Treat steel worm.
- Special bronze wheel.
- High strength aluminium casing.
- Oil lubrication.
- Assembly with keynut.



Tipo Type	Rapporti Ratios	Coppia nominale Rated torque
BW 50	7	67 Nm
	10	72 Nm
	15	76 Nm
	20	85 Nm
	25	96 Nm
	30	95 Nm
	40	88 Nm
	50	77 Nm
	60	71 Nm
	70	61 Nm
	80	59 Nm
	100	51 Nm



### OPZIONI :

- Flangia in uscita
- Albero in uscita mono o bisporgente
- Montaggio a piedi

### OPTIONS :

- Output flange
- Single or double-end output shaft
- Feet mounting

# Generatori tachimetrici & encoder

## Tachogenerators & encoders



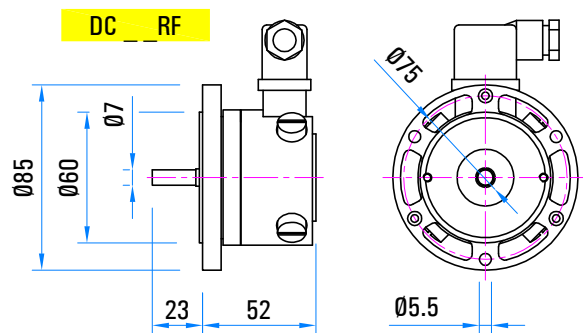
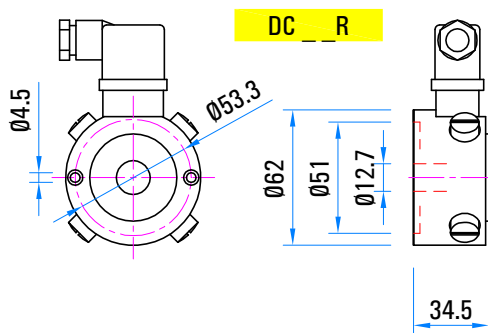
## Dinamo tachimetriche D.C. tachogenerators

### CARATTERISTICHE PRINCIPALI

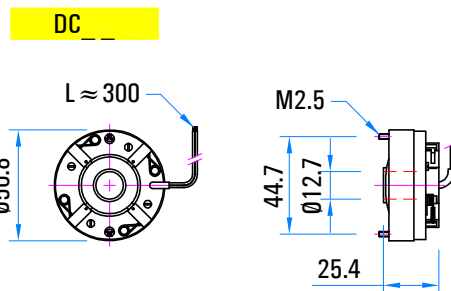
- Eccitazione a magneti permanenti Sm-Co.
- Spazzole in grafite/argento.
- Polarità dipendente dal senso di rotazione.
- Senso di rotazione reversibile.

### MAIN FEATURES

- Sm-Co permanent magnet field.
- Silver-graphite brushes.
- Polarity depending on direction of rotation.
- Direction of rotation reversible.



Tipo /Type	Tensione a / Voltage at 1000min <sup>-1</sup>
DC06 - DC06R - DC06RF	6V
DC10 - DC10R - DC10RF	10V
DC14 - DC14R - DC14RF	14V
DC19 - DC19R - DC19RF	20V



### OPZIONI :

- Cavo
- Adattatori per alberi Ø8 e Ø10
- Predisposizione encoder per DC\_\_R

### OPTIONS :

- Cable
- Adapters for shafts Ø8 and Ø10
- Encoder pre-arrangement on DC\_\_R

# DC 20/60

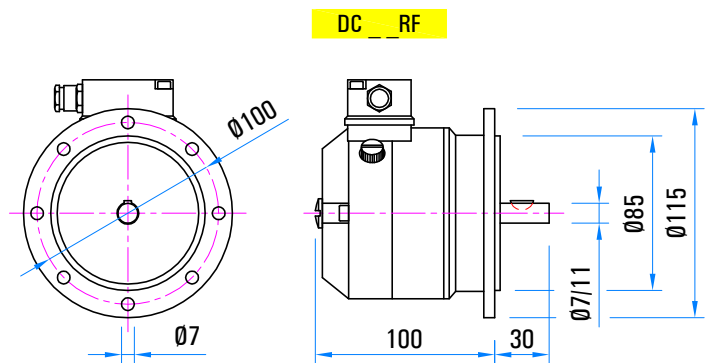
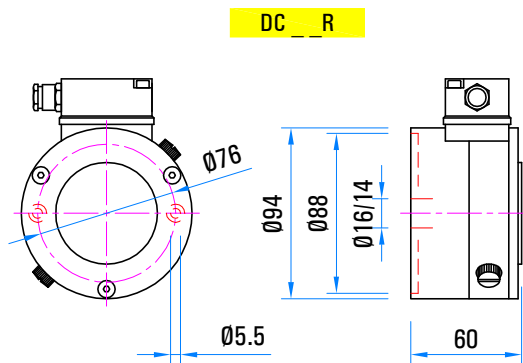
## Dinamo tachimetriche D.C. tachogenerators

### CARATTERISTICHE PRINCIPALI

- Eccitazione a magneti permanenti AlNiCo.
- Spazzole in grafite/argento.
- Polarità dipendente dal senso di rotazione.
- Senso di rotazione reversibile.

### MAIN FEATURES

- AlNiCo permanent magnet field.
- Silver-graphite brushes.
- Polarity depending on direction of rotation.
- Direction of rotation reversible.



Tipo / Type	Tensione a / Voltage at 1000min <sup>-1</sup>
DC 20 R	20V
DC 60 R	60V

Tipo / Type	Tensione a / Voltage at 1000min <sup>-1</sup>
DC 20 RF	20V
DC 60 RF	60V



### OPZIONI :

- Cavo
- Predisposizione encoder
- Altre tensioni

### OPTIONS :

- Cable
- Encoder pre-arrangement
- Other voltages

## Encoder Incrementali Incremental Encoders

### EH 30

- Basso costo - modulare - facile montaggio.
- Impulsi : fino a 1024 - canali ABZ.
- Alimentazione 5 + 28V - elettronica NPN,PNP,OC,PP,LD.
- Low cost - modular - easy to assemble.
- Pulses : until 1024 - ABZ channels.
- Supply 5 + 28V - electronic NPN,PNP,OC,PP,LD.



### EH/EL 62/75

- Montaggio tramite giunto.
- Impulsi : fino a 5000 - canali ABZ.
- Alimentazione 5 + 28V - elettronica NPN,PNP,OC,PP,LD.
- Assembly with joint.
- Pulses : until 5000 - ABZ channels.
- Supply 5 + 28V - electronic NPN,PNP,OC,PP,LD.



### E6 CE

- Montaggio diretto - Albero cavo con cuscinetti
- Impulsi : fino a 1024 - canali ABZ.
- Alimentazione 5 + 28V - elettronica NPN,PNP,OC,PP,LD.
- Direct assembly - Hollow shaft with ball bearings.
- Pulses : until 1024 - ABZ channels.
- Supply 5 + 28V - electronic NPN,PNP,OC,PP,LD.



### EF 36

- Montaggio diretto - Albero cavo con cuscinetti - Generazione ottica "Fasi effetto Hall".
- Impulsi : fino a 1024 - canali ABZ /  $\overline{ABZ}$ .
- Alimentazione 5V - elettronica Line Driver.
- Direct assembly - Hollow shaft with ball bearings - "Hall effect phases"optic generation.
- Pulses : until 1024 - ABZ /  $\overline{ABZ}$  channels.
- Supply 5V - electronic Line Driver.



### EF 49

- Montaggio diretto - Albero cavo con cuscinetti - Generazione ottica "Fasi effetto Hall".
- Impulsi : fino a 2048 - canali ABZ /  $\overline{ABZ}$ .
- Alimentazione 5V - elettronica Line Driver.
- Direct assembly - Hollow shaft with ball bearings - "Hall effect phases"optic generation.
- Pulses : until 2048 - ABZ/ $\overline{ABZ}$  channels.
- Supply 5V - electronic Line Driver.

